

FORD FLEET FLASH

JUNE 2020



Allen Williams • 313.594.4068 • awill607@ford.com

GOOD TO KNOW



LATEST TECH HELPS POLICE VEHICLES NEUTRALIZE COVID-19

Ford has designed a new heated software enhancement to pilot with its Police Interceptor® Utility – one that law enforcement agencies across the country can utilize to help reduce the footprint of COVID-19.

The latest example of smart vehicle technology, this software solution is available immediately on all 2013-19 Police Interceptor Utility vehicles in the United States, Canada and other countries around the world.

The solution is simple: bake the vehicle's interior until virus particles inside are inactivated. Using Police Interceptor Utility's own powertrain and climate control systems, this software solution enables vehicles to elevate passenger compartment temperatures for 15 minutes – long enough to help disinfect vehicle touch points.

Once activated, the vehicle's powertrain and climate control systems work together automatically to elevate passenger compartment temperatures. The software warms up the engine to an elevated level, and both heat and fan settings operate on high. The software automatically monitors interior temperatures until the entire passenger compartment hits the optimal level, then that temperature is maintained for 15 minutes.

[Learn More](#)



100 MPGe! ALL-NEW FORD ESCAPE PLUG-IN HYBRID BRINGS BEST-IN-CLASS EPA-ESTIMATED COMBINED FUEL ECONOMY

The all-new Ford Escape Plug-In Hybrid now has a best-in-class EPA-estimated economy rating of 100 MPGe combined and an EPA-estimated 37 miles of all-electric driving range.¹

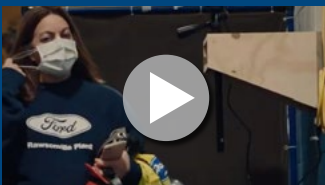
MPGe, or miles per gallon of gasoline equivalent, is an Environmental Protection Agency metric to compare the amount of energy consumed by alternative fuel vehicles – including those partially powered by electricity, like Ford Escape Plug-In Hybrid – to what traditional gas-powered vehicles consume.

“The original Ford Escape was the world's first hybrid SUV and the all-new Ford Escape Plug-in Hybrid represents how far we've come in technology and efficiency,” said Hau Thai-Tang, Ford chief product development and purchasing officer. “The all-new Escape plug-in has more power and more passenger space than the Fusion Energi plug-in, as well as up to four times the cargo volume behind its second-row seats.”

[Learn More](#)

WATCH IT

[CLICK HERE](#) for more Ford videos. [CLICK HERE](#) for Lincoln videos.



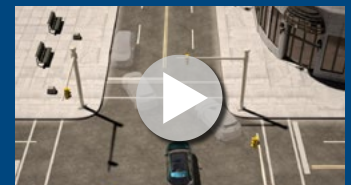
Built for America:
Never Idle



Ford Truck Plant Return-to-
Work Timelapse



How to Use Intelligent
Adaptive Cruise Control



What is Ford Post-Collision
Braking?

¹2.5L Plug-in Hybrid. Actual mileage and range will vary. Range calculation based on 11.2-gallon tank.



Mustang Mach-E. Preproduction model shown. Available early 2021.

KEY CONNECTIONS

PDF DOWNLOADS

- [2020 Fleet Preview Guide](#)
- [2020 Police & Special Service Vehicles](#)
- [2020 Safety & Technology Guide](#)
- [2020 Competitive Comparison Guide](#)

[CLICK HERE](#) for an extensive listing of information-packed Ford Fleet downloads.

FORD WEBSITES

- [Ford Fleet](#)
- [Ford Vehicles](#)
- [Ford Police](#)
- [Ford Commercial Vehicle Center](#)
- [Ford Owner](#)
- [Ford Credit](#)
- [Ford Corporate](#)
- [Ford Protect](#)
- [Ford Parts](#)
- [Ford Accessories](#)
- [Ford Media Center](#)
- [Ford Merchandise](#)
- [@Ford Online](#)

FORD SOCIAL MEDIA

- [Ford Social](#)
- [Facebook](#)
- [Twitter](#)
- [Instagram](#)
- [YouTube](#)

LINCOLN WEBSITES

- [Lincoln Vehicles](#)
- [Lincoln Owner](#)
- [Lincoln Protect](#)
- [Lincoln Accessories](#)
- [Lincoln Media Center](#)
- [Lincoln Collection](#)

LINCOLN SOCIAL MEDIA

- [Facebook](#)
- [Twitter](#)
- [Instagram](#)
- [YouTube](#)
- [Pinterest](#)

IN WITH THE NEW

2021 SUPER DUTY® (F-250/350/450)



Full-Size Pickups over 8,500 lbs. GVWR • Available in 3 cab styles (Regular Cab, SuperCab and Crew Cab) and 2 bed lengths (6.75' and 8.0') • Available TorqShift® 10-speed automatic transmission.

[Learn More](#)

2021 EXPEDITION



New exterior colors: Antimatter Blue¹ and Kodiak Brown¹ • Two 2nd-row smart-charging USB ports standard on XL² • STX Package includes 5-bar grille with Magnetic accents, tri-zone electronic automatic temperature control and more.

[Learn More](#)

2021 SUPER DUTY F-600 CHASSIS CAB



Available with 7.3L V8 gas engine or 6.7L Power Stroke® V8 Turbo Diesel engine • Standard TorqShift 10-speed automatic transmission with Selectable Drive Modes

[Learn More](#)

2021 TRANSIT



New exterior colors: Carbonized Gray,¹ Avalanche¹ and Abyss Gray¹ • New 16" black steel wheels with exposed lug nuts • Available 11,000-lb. GVWR on Cargo Vans

[Learn More](#)

¹Metallic. ²Excludes SSV.