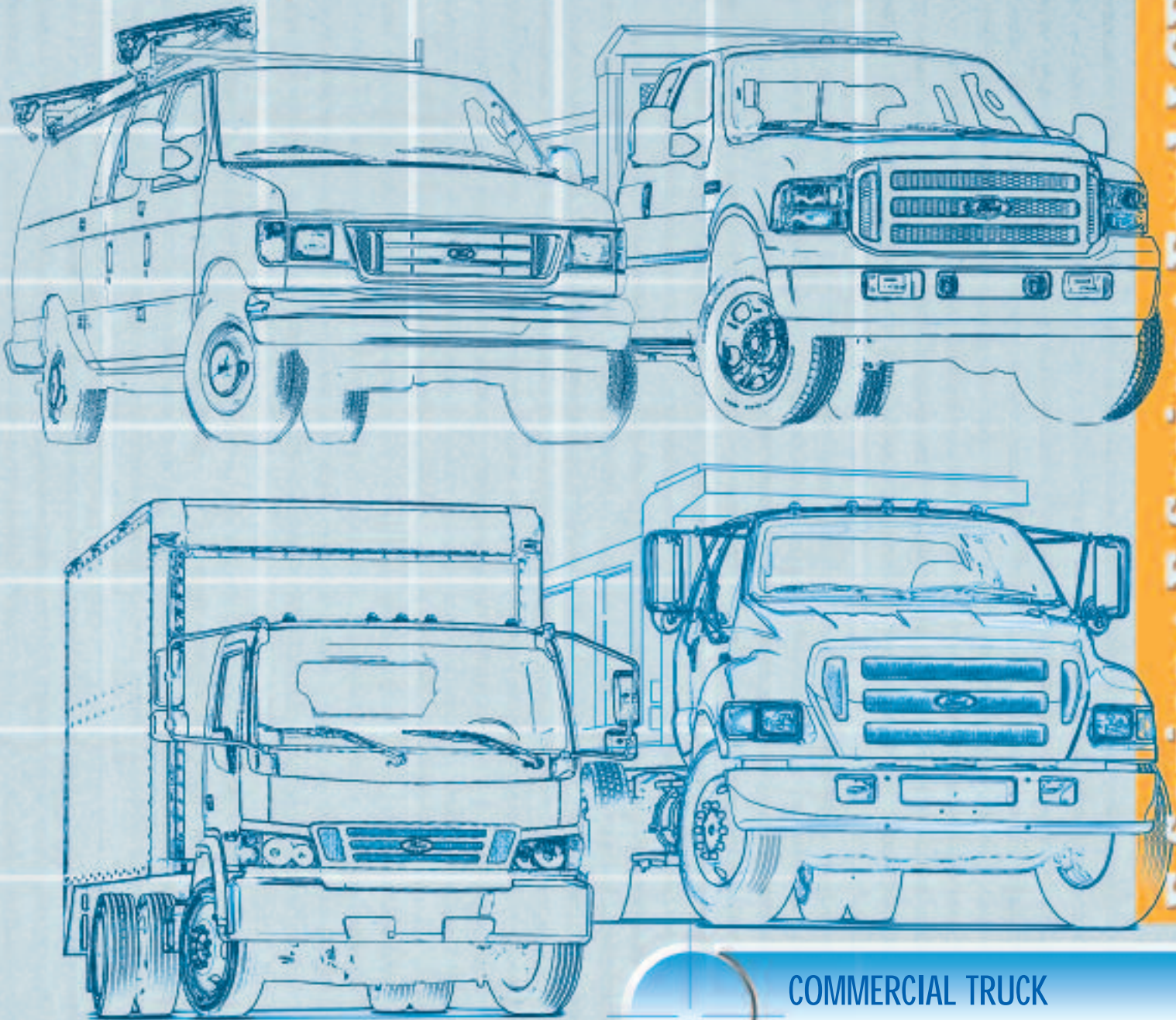


BUILT
Ford
TOUGH

WHAT'S NEW FOR 2007



E-Series • F-Series • Ford LCF

COMMERCIAL TRUCK
SPECIAL VEHICLE ENGINEERING

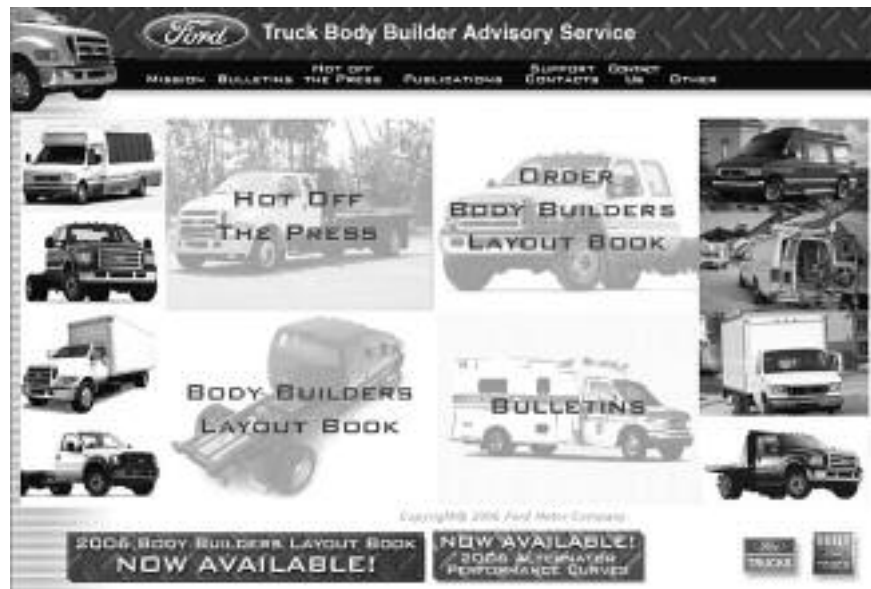


2007 Ford Truck "What's New" Guide

The purpose of this guide is to provide some advance insight into 2007 model year Ford Truck product features that may assist final stage manufacturers and vehicle alteration companies in preparing their production process.

This guide is for reference only, reflecting information available as of June 2006, and is subject to change without notice. It should be used in conjunction with other related Ford publications listed below. Methods to obtain these and other useful publications are described further in this manual.

FOR ADDITIONAL INFORMATION VISIT:
Truck Body Builder Advisory Service Website
(www.fleet.ford.com/truckbbas)



- Bulletins:** Lists links to the latest Bulletins for Ford Truck Quality Programs
★ New menu added to sort bulletins by vehicle line. ★
- Hot Off The Press:** Lists links to latest up-to-date publications available to body builders
- Publications:**
- **Body Builder Layout Book:** Provides access to and order capability for Body Builders Layout Book
 - **Quality Program Guidelines:** Lists links to Ford Truck Quality Program Guidelines for final stage manufacturers and vehicle alterers
 - **Incomplete Vehicle Manuals:** Lists links to model years 1997–2006 IVM's
- Support Contacts:** Lists frequently requested phone and fax numbers
- Other:** Links and Frequently Asked Questions (FAQ)

TABLE OF CONTENTS

<u>Page Number</u>	<u>Subject</u>
2	Body Builder Quality Programs
2	Assembly Plant Job #1 Timing
<hr/>	
3-7	E-Series Major Product Features
8-12	F-250/350/450/550 Super Duty Major Product Features
13-14	F-53 Major Product Features
15-19	F-650/750 Super Duty Major Product Features
20-22	Ford LCF Major Product Features
<hr/>	
23	Stationary Elevated Idle Control (SEIC)
23	Quality Focus Areas
23	F-250/350/450/550 Snow Plow
24	Obtaining Publications
25	Important Phone Numbers and Websites

Body Builder Quality Programs

The following organizations are established to provide technical assistance to vehicle modifiers of Ford Truck chassis. They are part of the Special Vehicle Engineering Department within Ford North American Truck.

- **TRUCK BODY BUILDER ADVISORY SERVICE (BBAS)**

Provides technical assistance for truck body builders

Phone: 877-840-4338

Fax: 313-594-2633

Web Site: www.fleet.ford.com/truckbbas

E-Mail: bbasqa@ford.com

- **SPECIAL VEHICLE ENGINEERING & QUALITY PROGRAMS**

Responsible for qualifying the engineering process control capability of final stage manufacturers under these Ford Truck Quality Programs:

- Ambulance Quality Program
- Motorhome & Transit Bus Quality Program
- Conversion Van Quality Program
- F-Series Quality Program
- Adaptive Mobility Quality Program
- Ship-Thru Quality Program

Assembly Plant Job #1 Timing

Vehicles	Assembly Plant	2007 Model Job #1
• E-Series	Ohio Assembly Plant	10/16/06
• F-250/350/450/550 Super Duty	Kentucky Truck Plant	5/15/06
• F-53 Class A Motorhome Chassis	Detroit Chassis Plant	12/04/06
• F-650/750 Super Duty	Escobedo, Mexico	4/03/06
• Ford LCF	Escobedo, Mexico	5/01/06

E-SERIES VAN / WAGON / CUTAWAY / STRIPPED CHASSIS 2007 MAJOR PRODUCT FEATURES



OVERVIEW

The versatility of the 2007 E-Series builds on its 27 consecutive year segment leadership. It's always there for our customers and their family or business needs with smart innovation and the right choices to get any job done. The E-Series is the Cutaway sales market leader. Refer to the current 2007 E-Series Order Guide for powertrain and axle availability.

FEATURES AND BENEFITS SUMMARY

<i>Feature</i>	<i>Benefit</i>
■ New E-250 Cutaway	■ 8600 lb. GVWR Cutaway Chassis with 4.6L gasoline powertrain.
■ AdvanceTrac® with Roll Stability Control (RSC) on E-350 SD Regular Length Wagons w/5.4L gasoline engine.	■ Improved vehicle control on slippery surfaces.
■ Over 8500 lbs. GVWR for all Vans and Wagons.	■ Increased carrying capacity for all E-Series Vans & Wagons.
■ E-150 Van and Wagon frame upgraded.	■ Reinforced frame provides up to 73% more payload capacity.
■ Reverse Sensing System option.	■ An audible signal when the Van or Wagon is in reverse while within 2 feet of an object.

E-Series – Other Features and Benefits



E-150 Van

GVWR

- All Vans and Wagons are rated at 8500 lbs. GVWR or greater.

GVWR RANGE (lbs.)		
	(Previous)	2007 (New)
E-150 Van	6700-7000	8520-8600
E-250 Van	7200-8600	8900-9000
E-350 Van	9250-9500	9400-9500
E-150 Wagon	7000	8520-8600
E-350 Wagon	8600-8700	8600-8700
E-350 Ext. Length Wgn.	9100-9300	9100



E-250 Cutaway

Model

- E-150 overall height at Curb Weight increases 0.9 inches; will continue to fit under a standard garage door.
- E-250 continues as the recommended MOBILITY chassis.
- New E-250 SRW Cutaway with 4.6L gasoline engine, 4R75E automatic transmission, 138 inch wheelbase, 35 gallon mid-ship fuel tank, 8600 lbs. GVWR. Available for upfit with a 10 ft. length body.
- New 10,000 lbs. GVWR E-350 DRW Cutaway with 158 inch wheelbase is available with 5.4L gasoline engine.
- E-350 7-passenger Chateau and 8-passenger Wagon models are no longer available.
- 8-lug wheels now common across all E-Series SRW vehicles.
- New forged aluminum wheel is Standard on E-150 Chateau Wagon and Optional on all SRW Van, Wagon and E-350 Cutaway (N.A. with 6.0L diesel engine).



COMMERCIAL VANS	
Trailer Tow Manual Mirrors	Standard
Trailer Tow Power Mirrors	Optional
Aero Power Mirrors	Included w/Power Group only available w/rear cargo doors w/glass

Trailer Tow Mirror

Paint & Trim

- Manual Trailer Tow mirrors are Standard on all Commercial Vans. Power Trailer Tow Mirrors are Optional. Power Aero Mirrors have limited Optional availability.
- Three new paint colors: Forest Green, Dark Blue Pearl and Pueblo Gold replace Light Tundra, True Blue and Gold Ash.
- Calvin texture replaces Cedar texture on XLT and Chateau cloth Captains chairs on Vans, Wagons and Cutaways.

E-Series – Other Features and Benefits - *continued*



5R110 Automatic Transmission

Powertrain/Chassis

- E-150 Van and Wagon frame is reinforced to support heavier loads.
- 5R110 automatic transmission will receive a torque upgrade in January 2007.
- Engine oil cooler is now standard on all models.
- 50 State emissions replace California emissions.



E-350 Regular Wagon

- 5.4L gasoline and 6.0L diesel engines only are available in E-350 11- or 12- passenger regular wagons. (6.8L gasoline engines are no longer available in these models.)
- Front stabilizer bar diameter is increased to 1.0 inch for E-150 Vans and Wagons.



E-150 Regular Van

- E-150 Van rear axle rating is increased to 5520 lb. from 3800 lb.
- New larger 4.5 inch diameter aluminum driveshaft is used with E-150 Vans and Wagons.
- LT 225/75Rx16E BSW A/S tires replace P235/70Rx16XL BSW A/S tires on E-150 Vans and Wagons.
- Full wheel covers replace stainless steel hub cap as Standard Equipment on Vans and Wagons.

E-Series – Other Features and Benefits - *continued*



FS18 Piston Type A/C Compressor

FUNCTIONAL CHANGES

Air Conditioning

- FS18 piston type A/C compressor improves quality and reliability with all gasoline engines. It replaces the previous scroll type compressor.

Electrical

- New CAN (Communications Area Network) instrument cluster.
- New CAN-based Body Security Module (BSM) replaces Remote Keyless Entry (RKE) and perimeter anti-theft components.
- Tow/Haul and Overdrive indicator lamps removed from gearshift lever and placed in cluster.
- Check Engine lamp replaced by separate Engine Temperature and Oil Pressure lamps in cluster.
- Cruise Control indicator relocated in cluster.
- New 135-Amp alternator is Standard with all Shuttle Bus and School Bus Prep Packages with either 5.4L or 6.8L gasoline engines. The 135-Amp alternator is optional with all other 5.4L or 6.8L gasoline applications.
- A 78-Amp. Hr. auxiliary battery is being provided with the “Battery Heavy Duty Auxiliary” option (634) replacing the 75-Amp. Hr. battery. This option is available on Van, Wagon and Cutaway models with gasoline engine. The gasoline engine main battery remains 72 Amp. Hr.
- AdvanceTrac® with Roll Stability Control (RSC) is now standard on E-350SD Regular length Wagons with 5.4L gasoline engine and 3.73 rear axle ratio. Refer to “What’s New for 2006” (available on BBAS website) for a discussion of details and features of RSC.



CAN (Communications Area Network) Instrument Cluster



RSC on Regular Length Wagon

E-Series – Other Features and Benefits - *continued*



Rear Bumper with Reverse Sensing System

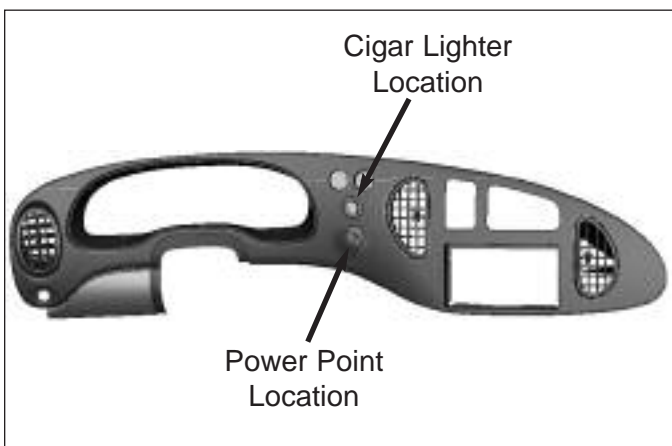
Electrical (continued)

- The Reverse Sensing System is available on all Vans and Wagons with either the standard contour bumper or the optional rear step bumper.



Instrument Panel Switch

- Reverse Sensing System option provides an audible signal when the vehicle is in reverse and an object is detected within two feet of the vehicle. An instrument panel mounted override switch is included.
- Reverse Sensing System is **not** an external back-up warning alarm.



Cigar Lighter and Power Point

- The locations of the Cigar Lighter and Power Point have been reversed from their previous locations for vehicles with AdvanceTrac® and/or Reverse Park Aid only. This provides additional clearance for power cords inserted in the Power Point. The Cigar Lighter is now high on the instrument panel and the Power Point is lower. **Note:** The Power Point is not intended to be used as a receptacle for the Cigar Lighter. The inside diameter of the Cigar Lighter receptacle is smaller than that of the Power Point receptacle.

F-250/350/450/550 SUPER DUTY

2007 MAJOR PRODUCT FEATURES



OVERVIEW

The 2007 Ford F-Series Super Duty meets the needs of a multitude of commercial vocations, as well as for personal use by customers desiring a powerful trailer towing vehicle. Continuing its “Built Ford Tough” image the F-Series reaches out to sophisticated truck buyers with new Lariat Crew Cab Outlaw Package and Lariat SuperCab Highline Edition. Attributes such as capability to get the job done, quality, reliability, power, breadth and depth of product choices solidly support F-Super Duty Pickup and Chassis Cab customers.

FEATURES AND BENEFITS SUMMARY

<i>Feature</i>	<i>Benefit</i>
<ul style="list-style-type: none"> ■ New SuperCab Lariat Highline Edition SRW pickup 	<ul style="list-style-type: none"> ■ Outstanding style and prestige in a well-planned cab.
<ul style="list-style-type: none"> ■ New Crew Cab Lariat Outlaw Package SRW pickup. 	<ul style="list-style-type: none"> ■ Pride of ownership and attractive styling combine to set this truck apart from others.
<ul style="list-style-type: none"> ■ New Ford Harley-Davidson™ Package available in three color combinations. Available only as Crew Cab Lariat SRW 4X4. 	<ul style="list-style-type: none"> ■ Distinction and class are obvious with this bold design regardless of which color combination is selected.

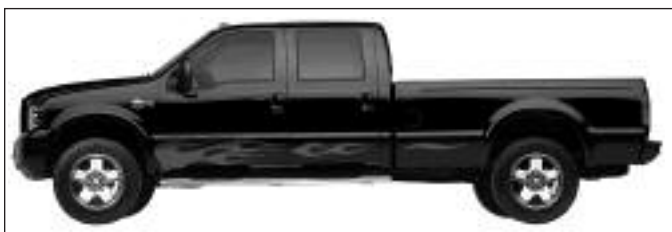
F-250/350/450/550 Super Duty – Other Features and Benefits



SuperCab Lariat Highline Edition (17M)



Lariat Outlaw Package on Crew Cab (17S)



Ford Harley-Davidson™ Package (17H)

Model/Trim

- New SuperCab Lariat Highline Edition (17M) SRW pickup is available only with automatic transmission and trailer tow mirrors. It is Optional on Lariat SuperCab and includes all Lariat standard features, plus the following:

- Three exterior colors: Red Clearcoat (F1), Black Clearcoat (UD) or Oxford White Clearcoat (Z1)
- Unique all Chromed billet-style grille
- Chromed exhaust tip and chromed tow hooks
- Chromed mirror caps
- Chromed pickup bed tie down hooks
- 5 inch Chromed tubular step bars
- Captain's Chairs with unique black leather seating surfaces
- Black leather-wrapped front floor console lid
- Unique Ebony accents (carpet, scuff plates and cowl trim)
- Brushed aluminum-style door trim panels
- Unique instrument panel inserts
- Instrument cluster with Chromed accents and enhanced message center with trip odometer

- New Crew Cab Lariat Outlaw Package (17S) 158" WB SRW pickup is available only with a 6.0L diesel engine, automatic transmission, 4x4, and trailer tow mirrors. It is Optional on Lariat Crew Cab and includes all Lariat standard features, plus the following:

- Black monotone paint with unique red tape stripe
- Body color front grill, mirror caps, door handles, wheel lip moldings, front and rear bumpers
- Chromed 5-inch step bars and exhaust tip
- Unique OUTLAW instrument panel insert
- All weather floor mats
- Brushed aluminum-style door trim panels
- Instrument cluster with chromed accents and enhanced message center with trip computer
- Unique Ebony interior accents (carpet, door trim inserts, scuff plates, B-pillars)
- Unique black and red leather-trimmed Captain's Chairs with FlexFold™ 60/40 rear bench seat
- Center console with black and red leather-wrapped lid
- Optional 20-inch forged aluminum wheels

- New Crew Cab Lariat SRW 4X4 Harley-Davidson™ Package (17H) is now available with the following three color combinations:

- Medium Wedgwood Blue with Black Flames (LD/85E)
- Dark Stone with Black Flames (T7/85E)
- Black with Medium Wedgwood Blue Flames (UD/85B)

F-250/350/450/550 Super Duty – Other Features and Benefits - *continued*



Tilt Steering Wheel

Model/Trim (continued)

- Tilt steering wheel without cruise control is now available as a stand-alone option on XL Fleet (LPO).
- Optional Power Equipment Group is now available on XL.



9,900 lbs. GVWR Package (SRW)

GVWR

- 9,900 lbs. GVWR package is available for F-350 SRW models with 6.8L gasoline engine.
- A 9,900 lbs. GVWR package is available with F-250 for Canada only.
- New Michelin XZE 225/70R 19.5G BSW premium all-position radial tires are available on Super Duty F-450 and F-550 models.



Standard 4.10 Axle Ratio (X41)

- The standard axle with the 5.4L gasoline engine is now the 4.10 non-limited slip axle (X41). The 3.73 non-limited slip axle (X37) is an option with the 5.4L gasoline engine.



6.0L Diesel Engine With 50-State Emissions



5.4L Gasoline Engine With Optional California Emissions



6.8L Gasoline Engine With Optional California Emissions

EMISSIONS CHANGES

Information on pages 11 and 12 is from the respective Order Guides and is subject to change without notice and without incurring obligation.

F-250 Super Duty

- The following vehicle configurations will not be available in California, Maine, Massachusetts, New York or Vermont:
 - F-250 5.4L gasoline engine with manual transmission.
 - F-250 6.8L gasoline engine.
- California Emissions System (422) is available with 5.4L gasoline engine with automatic transmission (995/44T).
- 50 State Emissions System (425) is forced with 6.0L diesel engine (99P) and is a Fleet Only option on 5.4L gasoline engine with automatic transmission (995/44T).
- Available July 2006:
 - F-250 5.4L gasoline engine with automatic transmission (95T/44T) and California Emissions System (442).
 - F-250 5.4L gasoline engine with automatic transmission (995/44T) and 50 State Emissions System (425).

F-350 Super Duty Pickup

- The following vehicle configurations will not be available in California, Maine, Massachusetts, New York or Vermont:
 - F-350 SRW/DRW 5.4L gasoline engine with manual transmission.
 - F-350 DRW 4x4 5.4L gasoline engine with automatic transmission.
 - F-350 DRW SuperCab and Crew Cab 4x2 with 5.4L gasoline engine with automatic transmission.
 - F-350 SRW/DRW 6.8L gasoline engine with manual transmission.
 - F-350 SRW/DRW 6.8L gasoline engine with automatic transmission with the 10,000 lb. GVWR Package
- California Emissions System (422) is available with the following vehicle combinations:
 - F-350 SRW with 5.4L gasoline engine, automatic transmission (995/44T) and California Emissions System (422).
 - Regular Cab DRW 4x2 5.4L gasoline engine with automatic transmission (995/44T).
 - SRW/DRW 6.8L gasoline engine with automatic transmission (99Y/44T) and without the 10,000 lb. GVWR Package (68D).

F-250/350/450/550 Super Duty – Other Features and Benefits - *continued*

EMISSIONS CHANGES *(continued)*

F-350 Super Duty Pickup *(continued)*

- 50 State Emissions System (425) is forced with 6.0L diesel engine (99P) and a Fleet Only option on the following configurations:
 - F-350 SRW with 5.4L gasoline engine, automatic transmission (995/44T) and 50 State Emissions System (425).
 - Regular Cab DRW 4x2 5.4L gasoline engine with automatic transmission (995/44T).
 - SRW/DRW 6.8L gasoline engine with automatic transmission (99Y/44T) and without the 10,000 lb. GVWR Package (68D).
- LATE AVAILABILITY: The following configurations will not be available until July:
 - F-350 SRW with 5.4L gasoline engine, automatic transmission (995T/44T) and California Emissions System (442).
 - F-350 SRW with 5.4L gasoline engine, automatic transmission (995/44T) and 50 State Emissions System (425).
 - F-350 DRW Regular Cab 4x2 with 5.4L gasoline engine, automatic transmission (995/44T) and California Emissions System (422).
 - F-350 DRW Regular Cab 4x2 with 5.4L gasoline engine, automatic transmission (995/44T) and 50 State Emissions System (425).
 - F-350 SRW/DRW 6.8L gasoline engine with automatic transmission (99Y/44T) and California Emissions System (422), less the 10,000 lb. GVWR Package (68D).
 - F-350 SRW/DRW 6.8L gasoline engine with automatic transmission (99Y/44T) and 50 State Emissions System (425), less the 10,000 lb. GVWR Package (68D).

F-350 Super Duty Chassis Cab

- For the 2007 model year the following vehicle configurations will not be available in California, Maine, Massachusetts, New York or Vermont:
 - F-350 SRW 5.4L gasoline engine with manual transmission.
 - F-350 DRW 5.4L gasoline engine.
 - F-350 SRW/DRW 6.8L gasoline engine with manual transmission.
- California Emissions System (422) is available with the following vehicle combinations:
 - SRW with 5.4L gasoline engine with automatic transmission.
 - 6.8L gasoline engine with automatic transmission.
- 50 State Emissions System (425) is available on Fleet Only with the following configurations:
 - SRW 5.4L gasoline engine with automatic transmission.
 - 6.8L gasoline engine with automatic transmission.
- LATE AVAILABILITY: The following configurations will not be available until July:
 - F-350 SRW 5.4L gasoline engine with automatic transmission and California Emissions (422).
 - F-350 SRW 5.4L gasoline engine with automatic transmission and 50 State Emissions (425).
 - F-350 SRW/DRW 6.8L gasoline engine with automatic transmission and California Emissions (422).
 - F-350 SRW/DRW 6.8L gasoline engine with automatic transmission and 50 State Emissions (425).

**Green State Order Restrictions
California, Maine, Massachusetts, New York and Vermont**

	5.4L			6.8L	
	Manual	Auto.		Manual	Auto.
F-250 Pickup - All cabs, 4x2 & 4x4	X	X		X	X
F-250 Box Delete - All cabs, 4x2 & 4x4	X	X		X	X
F-350 Pickup SRW - All cabs, 4x2 & 4x4	X	X		X	X
F-350 Box Delete SRW - All cabs, 4x2 & 4x4	X	X		X	X
F-350 Pickup DRW 4x2, All cabs except where noted	X	X	a/	X	X
F-350 Pickup DRW 4x4, All cabs	X	X		X	X
F-350 Box Delete DRW - All cabs, 4x2, 4x4	X	X		X	X
F-350 Chassis Cab - SRW - All cabs, 4x2 & 4x4	X	X		X	X
F-350 Chassis Cab - DRW - All cabs, 4x2 & 4x4	X	X		X	X

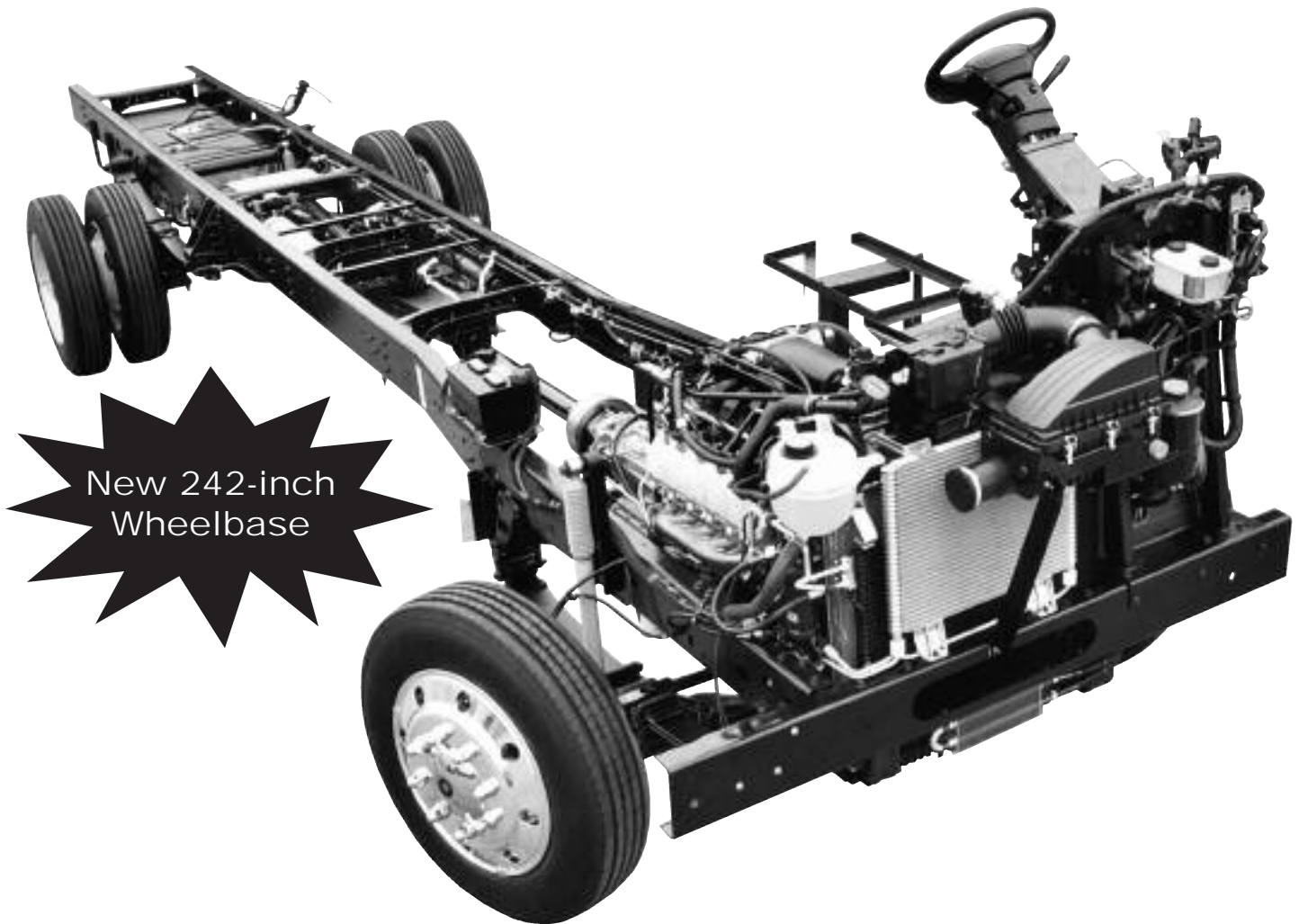
a/ Auto - SuperCab and Crew Cab

b/ w/Fixed 10K GVWR or 9900 GVWR Pkg.

= Not Available until Model Year 2008.

F-53 CLASS A MOTORHOME CHASSIS

2007 MAJOR PRODUCT FEATURE CHANGES



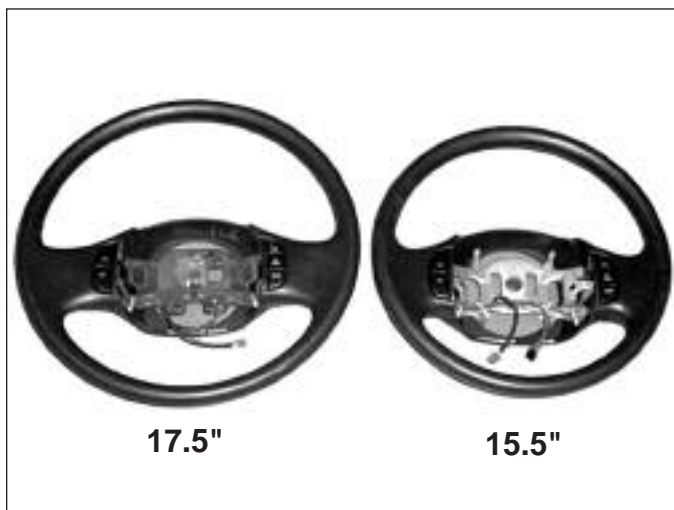
OVERVIEW

Year after year, Ford F-53 Chassis has been a popular choice for a Class A Motorhome. Its powerful 6.8L 3V gasoline engine, its 5-speed automatic overdrive transmission with "Tow/Haul" feature, its tough ladder-type frame, its range of wheelbase offerings and gross vehicle weight ratings make this the choice of many RV'ers.

FEATURES AND BENEFITS SUMMARY

<i>Feature</i>	<i>Benefit</i>
■ New S-110 Rear Axle for 20,500 lb. GVWR Option (late 2006 MY change).	■ Reduces chassis weight for increased payload.
■ New S-130 Rear Axle for 22,000 lb. GVWR Option.	■ Reduces chassis weight, allows increased payload.
■ Larger 17.5-inch steering wheel included with 18,000, 20,500 and 22,000 lb. GVWR options	■ Enhances steering ease and vehicle control.
■ New 242-inch wheelbase is now available for 22,000 lb. GVWR option.	■ Additional wheelbase selection is in response to customer requests.
■ 15,700 lb. GVWR increased to 16,000 lb. GVWR.	■ Increases legal payload capacity.

F-53 Class A Motorhome Chassis – Other Features and Benefits



New 17.5-inch Diameter Steering Wheel

Model/Trim

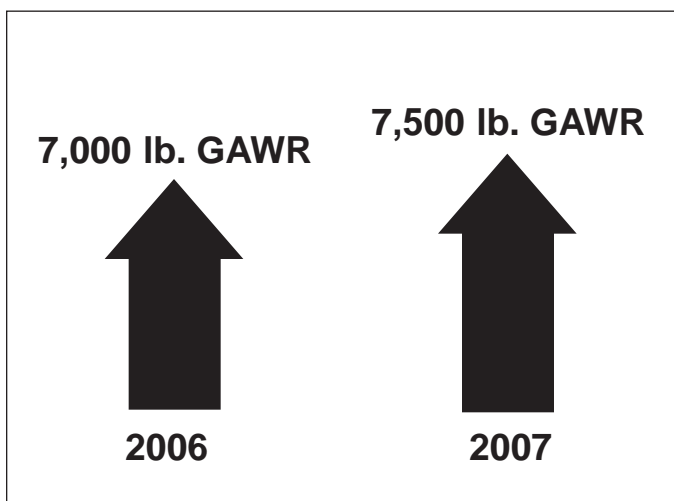
- New 17.5-inch diameter Steering Wheel replaces the 15.5-inch Wheel on 18,000, 20,500 and 22,000 lb. GVWR options.
- Daytime Running Lights (DRL) are no longer included on chassis built for sale in the United States. Refer to Bulletin No. Q137 (available on BBAS website) for installation instructions for chassis being outfitted for sale in Canada.



Spare Tire and Wheel

Chassis

- Balanced Spare Tire and steel 19.5-inch Wheel are a single option.
- The Spare Wheel can no longer be ordered separately.



Optional 7,500 lb. Front GAWR is available on the 20,500 lb. chassis

- An upgrade to 7,500 lb. Front GAWR is available on 20,500 lb. chassis as an option to the standard 7,000 lb. rating.
- 15,700 lb. GVWR is increased to 16,000 lb. GVWR.

F-650/750 SUPER DUTY

2007 MAJOR PRODUCT FEATURES



OVERVIEW

The F-650/F750 Super Duty are proven products with outstanding quality. Ford uses continuous improvement to refine their design and assembly practices. These trucks continue to supply the ruggedness, reliability and comfort demanded in the Class 6 and 7 diesel market. Three factory-built cab configurations provide customers the opportunity match the truck to the desired commercial application. Added flexibility is provided by a choice of F-650 straight frame or F-650 "Pro Loader" kick-up frame for low frame height while maintaining a flat top of frame design.

FEATURES AND BENEFITS SUMMARY

<i>Feature</i>	<i>Benefit</i>
<ul style="list-style-type: none"> ■ New Standard Cummins 200HP (99A) diesel engine. 	<ul style="list-style-type: none"> ■ Dependable, powerful diesel engine gets the job done (not available in F-750S).
<ul style="list-style-type: none"> ■ Rear axles available with Driver Controlled Locking Differentials (DCLD) and manual transmissions. 	<ul style="list-style-type: none"> ■ Previously available only with automatic transmissions.
<ul style="list-style-type: none"> ■ FSO-6406A 6-speed manual overdrive transmission. 	<ul style="list-style-type: none"> ■ 6-speed manual overdrive transmission is now available for all F-650/F-750 models.
<ul style="list-style-type: none"> ■ Allison 3200 TRV/CR 5-speed transmission. 	<ul style="list-style-type: none"> ■ Expanded choice of 5-speed and 6-speed TRV/CR transmissions.

F-650/750 Super Duty – Other Features and Benefits



Cummins 200 Horsepower Diesel Engine

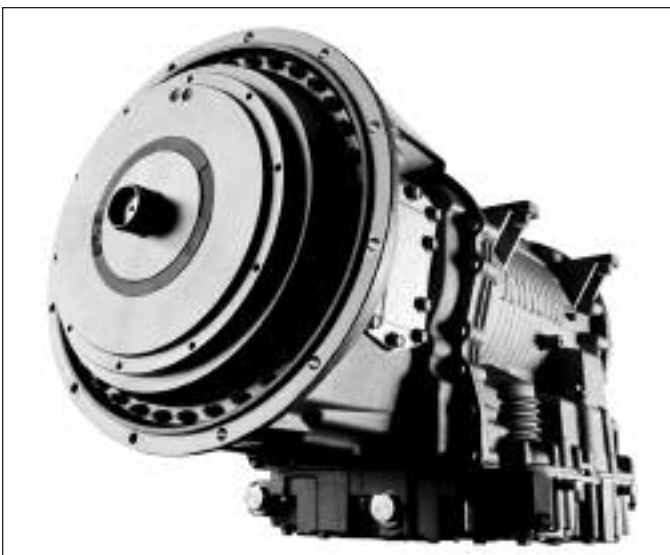
Powertrain/Chassis

- Cummins 200 HP (99A) diesel engine is Standard replacing the Power Stroke 200HP (99Y) in all models except F-750S. The 6.0L Power Stroke diesel and Caterpillar C7 diesel engines remain available options.



Fuller FSO-6406A Six-Speed Manual Transmission

- FSO-6406A 6-speed manual overdrive transmission (44C) is available in all F-650/F-750 models.



Allison 3200 TRV/CR Automatic Transmission

- Allison 3200 TRV/CR 5-speed automatic transmission is now available for Truck Recreational Vehicle usage. This expands the available choice to both a 5-speed and 6-speed TRV/CR.

F-650/750 Super Duty – Other Features and Benefits



Allison Automatic Transmission 4th Generation Shift Controls

Powertrain/Chassis (continued)

- Allison automatic transmissions are now equipped with new 4th Generation shift controls.
- Electronic controls assure efficient operation in all kinds of terrain and traffic conditions.
- A microprocessor monitors engine rpm and precisely adjusts shifts to maximize performance and lower fuel consumption.
- Controls are CAN (J1939) based.
- Selector incorporates an integral connector.
- New selector has separate two-digit vacuum fluorescent displays for viewing range selected and range currently attained.
- Characters displayed are large and bright.



Two New 23,000 lb. Rear Axles

- Two new 23,000 lb. rear axles feature expanded ratio selections.
 - S23-170 (47N) replaces Dana 23090S.
 - S23-170D (47P) replaces Dana 23090D and contains Driver Controlled Locking Differential (DCLD).



- 21,000 lb. Dana 21060D (47H) and 23,000 lb. Dana S23-170D (47P) rear axles with driver controlled locking differential (DCLD) are now available with manual transmissions. They were previously available only with automatic transmissions.



Driver Controlled Locking Differentials (DCLD)

F-650/750 Super Duty – Other Features and Benefits



Optional Hydraulic Brake Lining

FUNCTIONAL CHANGES

Brakes

- Optional hydraulic brake lining is available for 26,000 lb. or lower GVWR when one or more of the following conditions exist:
 - Loaded to 70% of rated GVWR more than 50% of the time.
 - Continuous stop and go operation for majority of operating time.
 - Hilly or mountainous operating terrain.



Bendix® ABS-6



*Stability System
Traction Switch*

- Bendix® ABS brake system is updated to ABS-6 Advanced with ESP® (Electronic Stability Program) Stability System.
- The new Off-Road Traction switch replaces the prior Traction Control switch. Activation modifies the Traction Control settings to better cope with the greater slippage and uneven ground common in off-road situations.



Air Brake Chambers on F-650PL

- Air brake chambers are mounted on the front of the rear axle with Pro Loader F650PL Models.

F-650/750 Super Duty – Other Features and Benefits



7-Wire Trailer Wiring Available With Hydraulic Brakes



Diesel Anti-gel Additive



New Fuel Level Sending Unit

FUNCTIONAL CHANGES (continued)

Electrical

- 7-way trailer wiring connection to end of frame is now an available option with hydraulic brakes. This provides wiring for an electric brake controller (controller not supplied with this option).

Fuel

- Diesel fuel anti-gel additive (Gold Eagle #2106) is now provided in the factory fuel.
- Aluminized fuel tanks are now standard (introduced December 2005).
- New fuel level sending unit is more robust and less susceptible to contamination or fuel "slosh."

FORD LCF

2007 MAJOR PRODUCT FEATURES



OVERVIEW

The 2007 Ford LCF-45 and LCF-55 trucks are engineered and designed specifically for the North American market. Traditional Ford toughness meets the needs of countless commercial vocations and applications. Primary concerns of buyers are maneuverability, visibility, and low operating costs. Standard automatic transmission makes it easy for anyone to operate with confidence. The tilt-forward cab provides wide open access to the engine for maintenance and service.

FEATURES AND BENEFITS SUMMARY

<i>Feature</i>	<i>Benefit</i>
<ul style="list-style-type: none"> ■ Industry standard wiring and tail lights are now similar to F-650/750 Series. ■ New seat configuration and fabric offerings. 	<ul style="list-style-type: none"> ■ Enables installation of trailer wiring without need for an expensive conjoiner box. ■ Large center seat folds down to provide a center console with cup holders and work space with hold-down straps.

Ford LCF – Other Features and Benefits



New Standard (60/40) Cloth Seats



New Seats and Fabrics



Michelin Traction Rear Tires



Combined Tail Lamp and Stop Lamp

Model/Trim

- New Standard cloth seat (60/40) has an integral center headrest.
- Center seat back folds down to form a center console with cup holders and work space with hold-down straps.
- All seating positions have integral headrests.

- New, improved Optional vinyl seat material and pattern is now available as a credit option.

FUNCTIONAL CHANGES

Tires

- New optional Michelin rear traction tire offering 225/70R19.5 XDE M/S (RGL).
- Rear shock absorbers are now optional (68S).

Electrical

- New combined tail lamp and stop lamp wiring to U.S. 2-bulb wiring standards. Enables installation of trailer wiring without the addition of a conjoiner box.
- Remote Keyless Entry becomes a stand alone option (904).
- A/C continues as a stand alone option (572); no longer part of an upgrade package.

Ford LCF – Other Features and Benefits



Standard Power Windows and Locks

FUNCTIONAL CHANGES (continued)

- Power windows and locks are now Standard (previously optional).
- Crank windows are now Optional.



Diesel Anti-gel Additive

Fuel

- Diesel fuel anti-gel additive (Gold Eagle #2106) is now provided in the factory fuel.
- Aluminized fuel tanks are now Standard (introduced December 2005).



New Fuel Level Sending Unit

- New fuel level sending unit is more robust and less susceptible to contamination or fuel “slosh.”

Stationary Elevated Idle Control (SEIC)

E-250/350/450

- Diesel circuits PTO Confirm (PTOC) and Battery Charge Protect Illumination (BCPIL) reinstated.
- SEIC circuits added to E-350 Vans with 5.4L gasoline engine with 4R75E transmission, effective June 2005.

F-250/350/450/550

Special Vehicle Engineering Bulletin Q108 is revised to describe significant changes to the SEIC for this series of trucks. An important change is to highlight the need for the temperature of a gasoline engine to be at 140 degrees Fahrenheit before the SEIC will activate. The complete bulletin is available on the BBAS website.

F-650/750

Special Vehicle Engineering Bulletin Q134 provides instructions for moving the Cummins engine cruise control function to a remote location. This allows remote operation of SEIC. The bulletin is available on the BBAS website.

FORD LCF

- ECM (Electronic Control Module) strategy now allows a Ford dealer to program new/different default speeds when requested by an upfitter.
- SEIC shut-down character is changed to meet the needs of tow truck builders.
- SEIC activation character is changed to meet the needs of refuse truck builders.

Quality Focus Areas CY 2006 Areas of Quality Focus

Through a recent customer survey, the following areas have been identified as key “Areas of Focus” in improving modified vehicle quality. A review of your quality processes in these focus areas will improve manufacturing efficiency, reduce warranty, increase customer satisfaction and save money.

Exterior Paint

- Body rust/corrosion
- Peeled paint
- Flaws in graphics
- Chipped/scratched paint

Water Leaks

- Cab to box seal
- Cargo doors and utility doors
- Box and cargo area leaks
- Slide-outs

Seats

- Holes/tears/snags/cracks/cuts
- Faded/discolored/soiled/worn
- Splitting seams
- Seat loose

Squeaks & Rattles

- Interior components
- Divider door on cargo boxes

Radio/Entertainment

- Poor quality aftermarket radios
- Antenna not matched to radio

For assistance with Quality Process Development in these key areas, contact the Ford Truck Body Builder Advisory Service (BBAS).

F-250/350/450/550 Snow Plow

- Unique powertrain control strategy added to 5.4L/4x4/with Heavy Duty Payload Package to help prevent engine overheating in highway driving with snow plow blade raised.

OBTAINING PUBLICATIONS

Ford Truck Body Builders Layout Book

Order and access via www.fleet.ford.com/truckbbas.

Incomplete Vehicle Manuals

Access at www.fleet.ford.com/truckbbas under “Publications”.

Ford Recreation Vehicle and Trailer Towing Guide

The guide covers cars and light trucks, and includes trailer and camper weight ratings and the list of vehicles suitable for flat-towing. A copy can be obtained by contacting the Ford RV Information Service at (800) 245-7343, leave name and shipping address, or Fax to (248) 936-3300. This guide can also be accessed via the web at www.fleet.ford.com/truckbbas under “Publications”.

Service Publications

The “Ford Technical Publications Catalog” lists the service publications available, and includes pricing, an order form, and a mailer. Contact Helm, Inc. at 800-782-4356.

Some Service Publications are also available online at www.motorcraft.com. See Bulletin Q-118 on the BBAS website for additional information. Useful publications include “Truck Wiring Diagrams” and the “Service Specifications” book.

Body Builder Quality Bulletins

Body Builder Quality Bulletins provide key information to assist body builders in interfacing with a Ford chassis. Access the bulletins via the web at www.fleet.ford.com/truckbbas under “Bulletins”.

Ford Truck Quality Program Guidelines

This manual provides guidelines for final stage manufacturer modifying Ford products. It also includes an introduction to process controls, quality controls, customer support and management practices. Access the guidelines via the web at www.fleet.ford.com/truckbbas under “Publications”.

IMPORTANT PHONE NUMBERS AND WEBSITES

INTENDED FOR GENERAL USERS & CUSTOMERS OF COMPLETED VEHICLES

Ford Customer Assistance

Customer Assistance Center: 800-392-3673
Roadside Assistance Center: 800-241-3673
Web Site: www.ford.com

Ford RV (Customer Assistance Center)

To locate the nearest RV service center: 800-444-3311

INTENDED FOR FINAL STAGE MANUFACTURERS & VEHICLE MODIFIERS

Ford Truck Body Builders Advisory Services (BBAS) – including F-Super Duty Class “A” (F-53) Motorhome Chassis

Truck: 877-840-4338
Fax: 313-594-2633
Web Site: www.fleet.ford.com/truckbbas
E-Mail Address: bbasqa@ford.com

List of Ford Pool Accounts and Qualified Vehicle Modifiers

www.fleet.ford.com/truckbbas > Other > QVM Participants or www.fleet.ford.com > Showroom
Then: Select the desired vehicle type (Ambulance, Motorhome, etc.) > Choose a chassis type
(if required) > Modifier Links-Qualified Vehicle Modifiers

Ford Alternative Fuels Information

Vehicle models available, list of authorized Ford dealers, and Leaf & Road Newsletter.
1-800-34-FLEET
Select #5

Ford Component Sales

313-390-0759
Fax: 313-390-1581

Vehicle Special Order, VSO Fleet Sales

1-800-34-FLEET
Select #4



North American Truck
Special Vehicle Engineering Department

Information herein was correct when approved for printing. Ford Motor Company reserves the right to discontinue or change at any time, specifications, designs or programs without incurring obligation.