

Q-259



SVE BULLETIN

SPECIAL VEHICLE ENGINEERING – BODY BUILDERS ADVISORY SERVICE

E-Mail via Website: www.fleet.ford.com/truckbbas (click "Contact Us")

Toll-free: (877) 840-4338

QVM Bulletin: Q-259

Date: 23 September, 2016

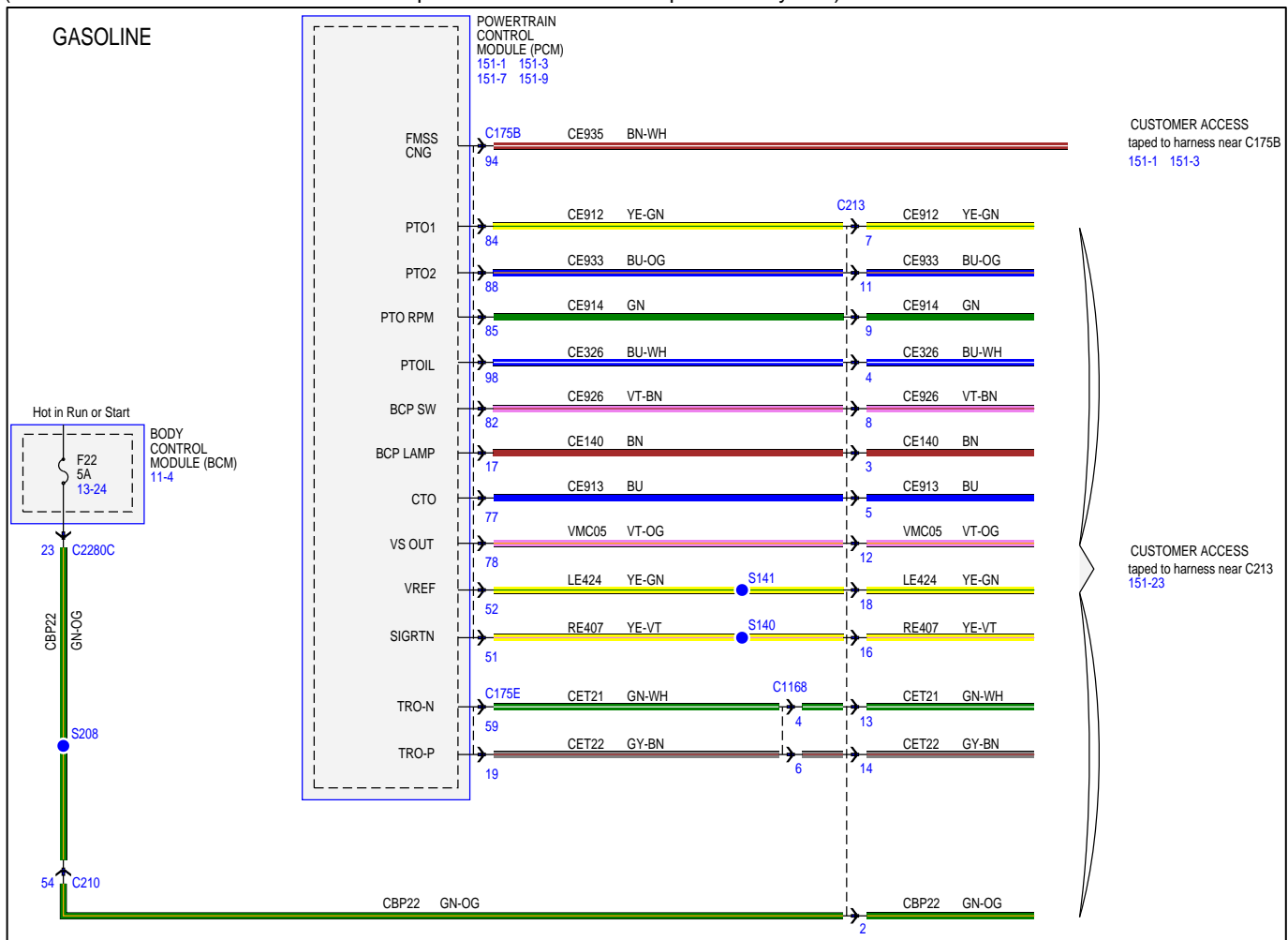
2017 MY Super Duty Customer Access Circuit Schematics

Models Affected: 2017 and later Model Year (MY) F-250/350/450/550 vehicles

Description: The following are the schematics for the circuits provided for customer use on 2017 MY F-Super Duty. Additional schematics beyond those shown in this document are available in the workshop manual. Refer to SVE Bulletin Q-118R1 for more information.

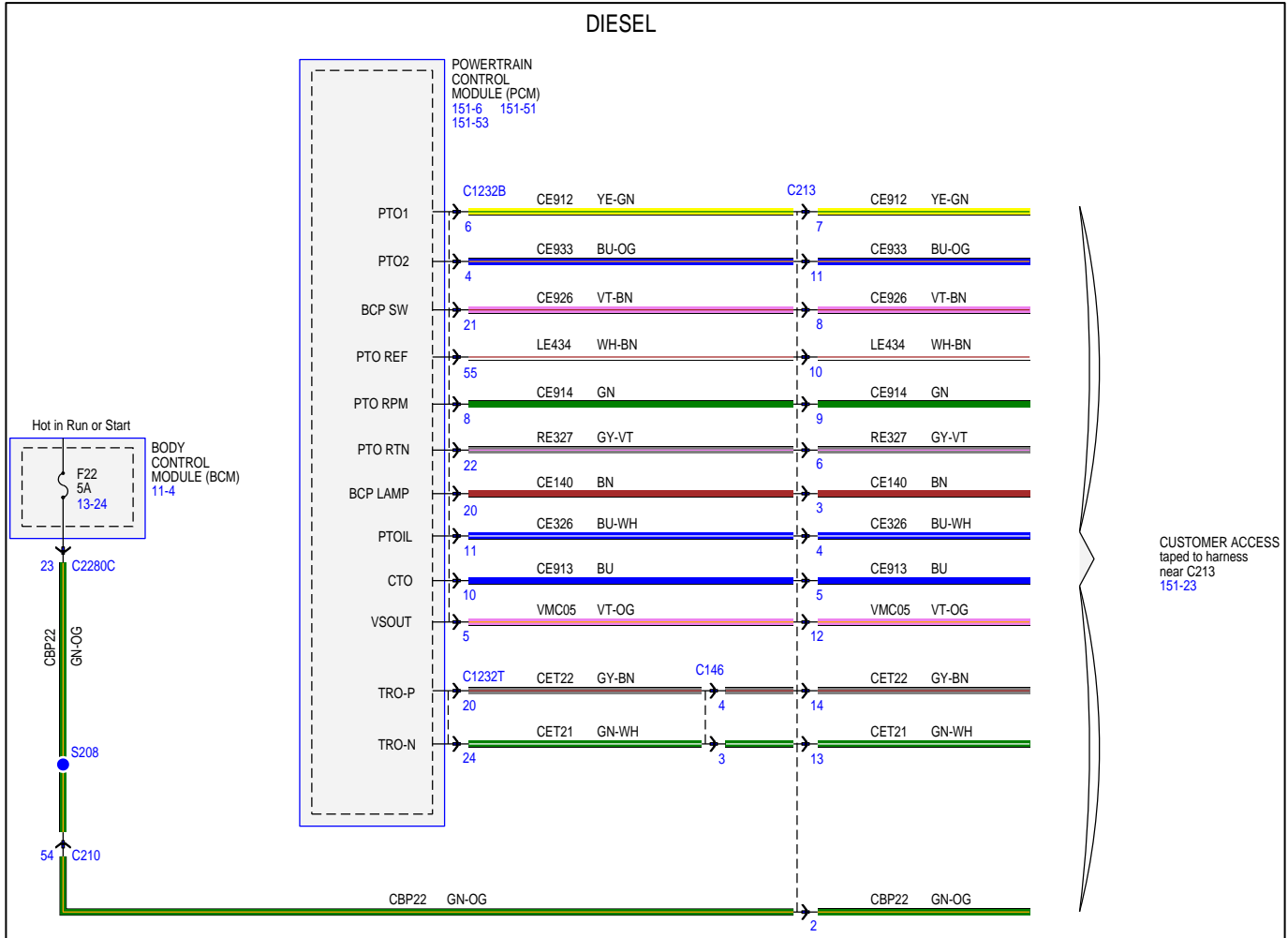
PCM SEIC Interface – Gasoline

(Refer to Q-252 for more information on upfitter switches and the Upfitter Relay Box)

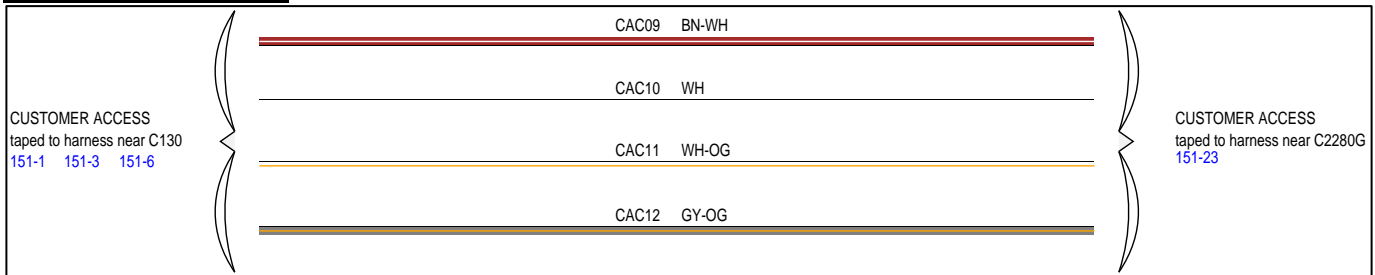


PCM SEIC Interface – Diesel

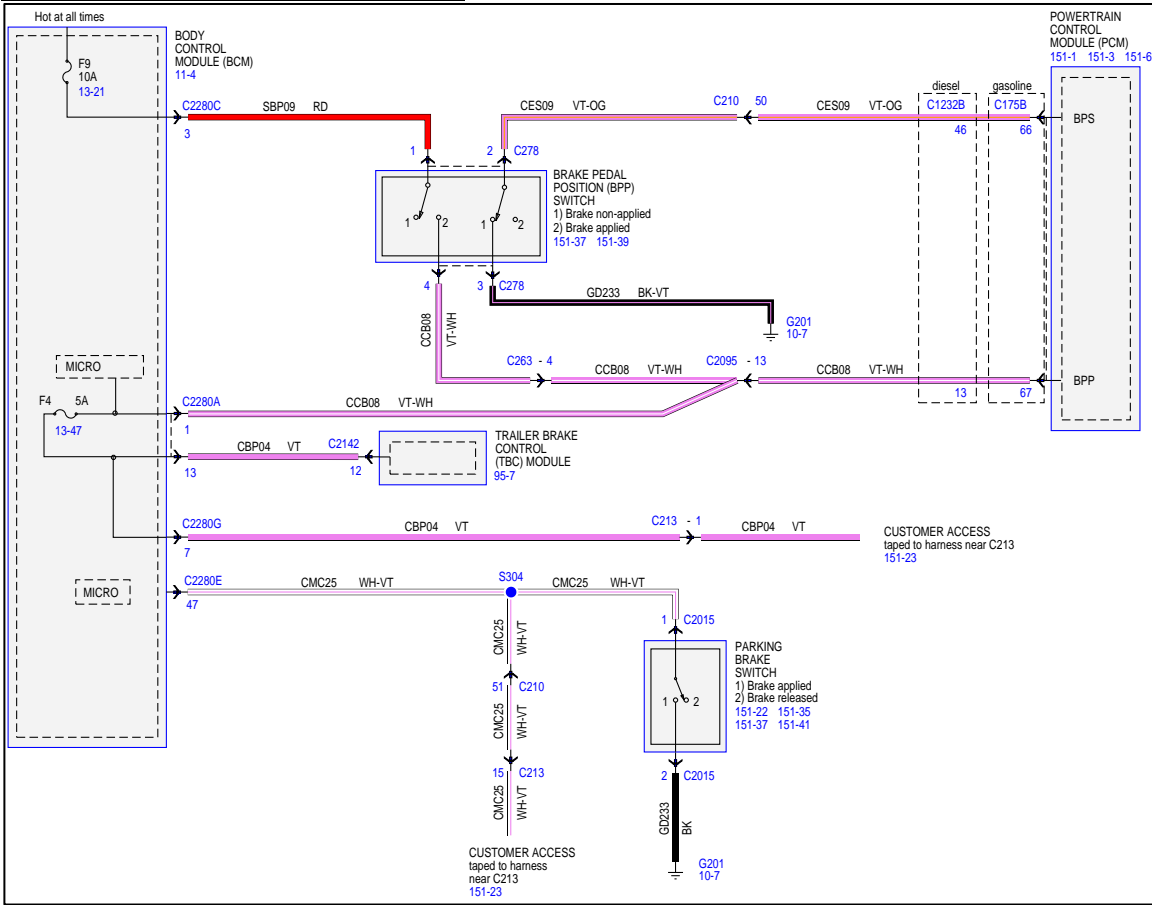
(Refer to Q-252 for more information on upfitter switches and the Upfitter Relay Box)



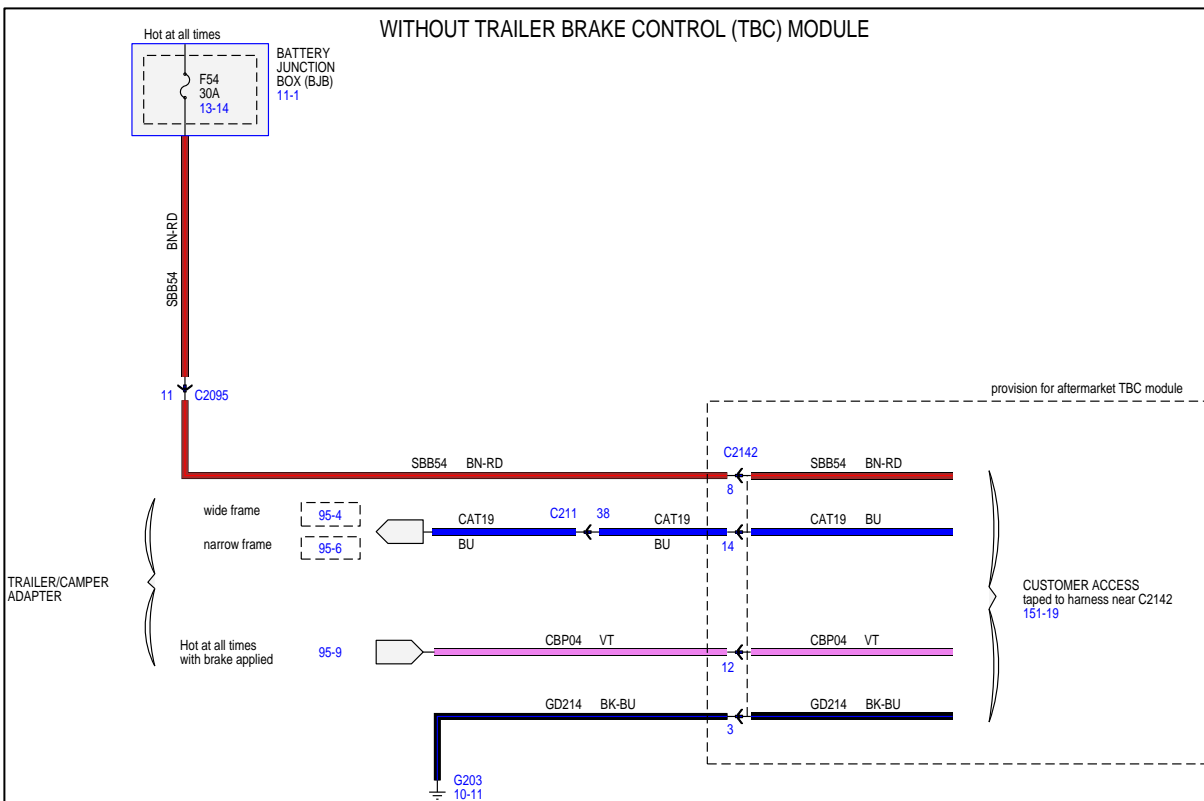
Pass-Through Circuits



Park Brake and Brake Signal Access

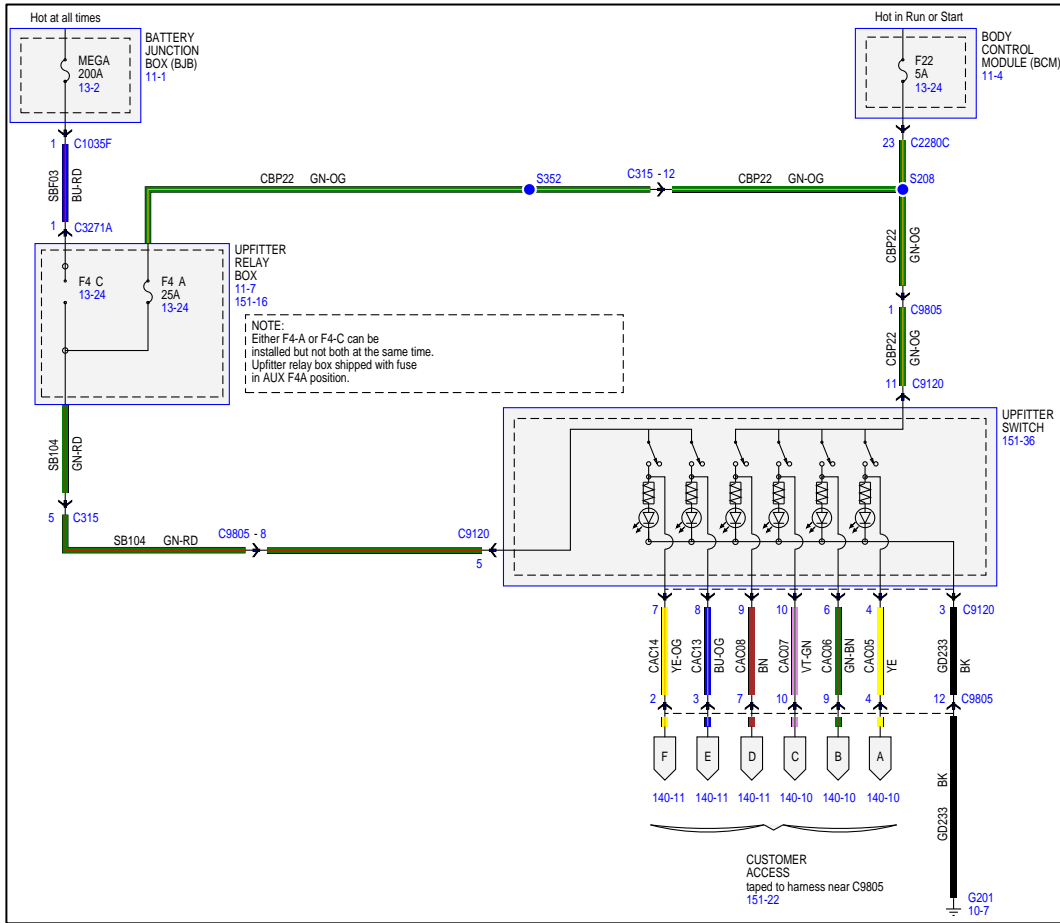


Aftermarket Trailer Brake Controller Interface

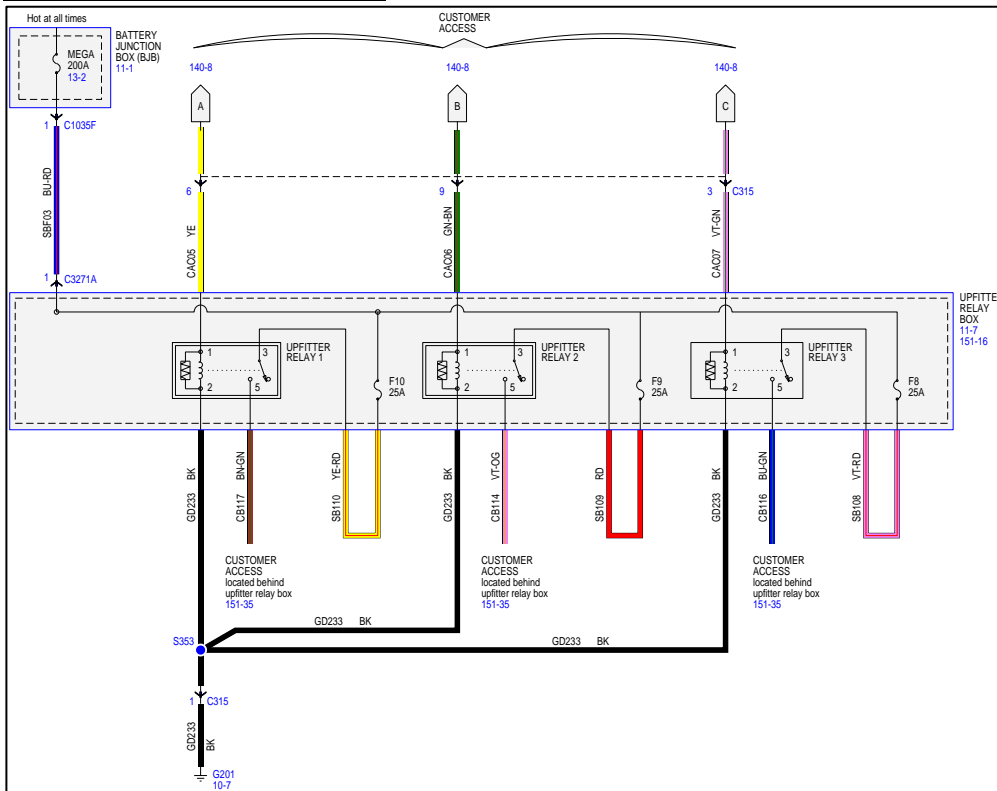


Upfitter Switch Access

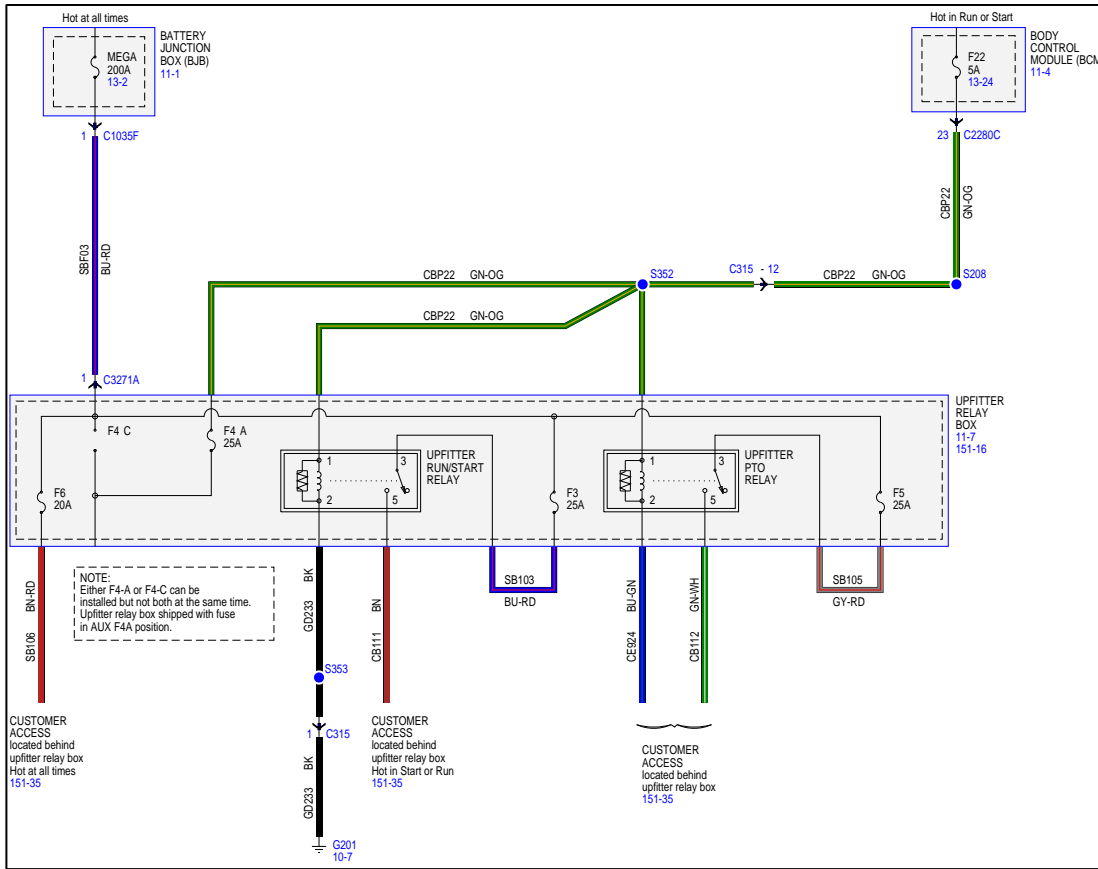
(Refer to Q-252 for more information on upfitter switches and the Upfitter Relay Box)



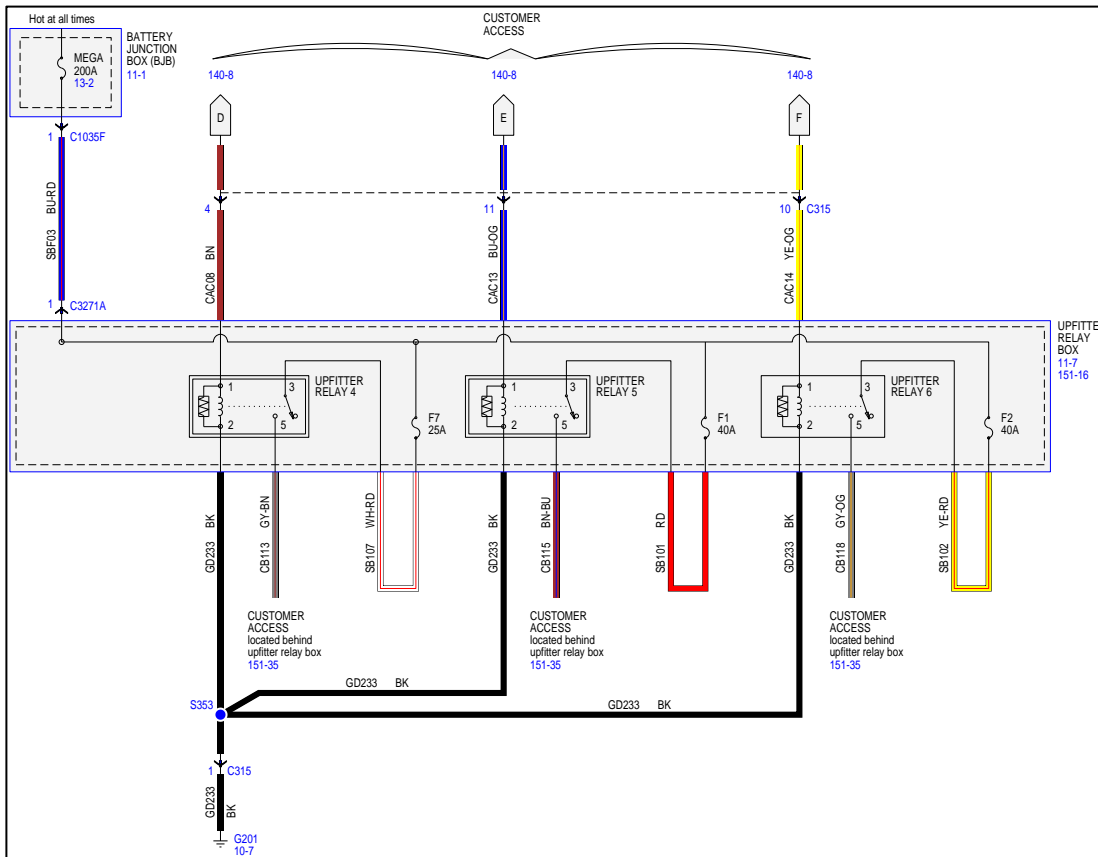
Upfitter Switch Access (Cont.)



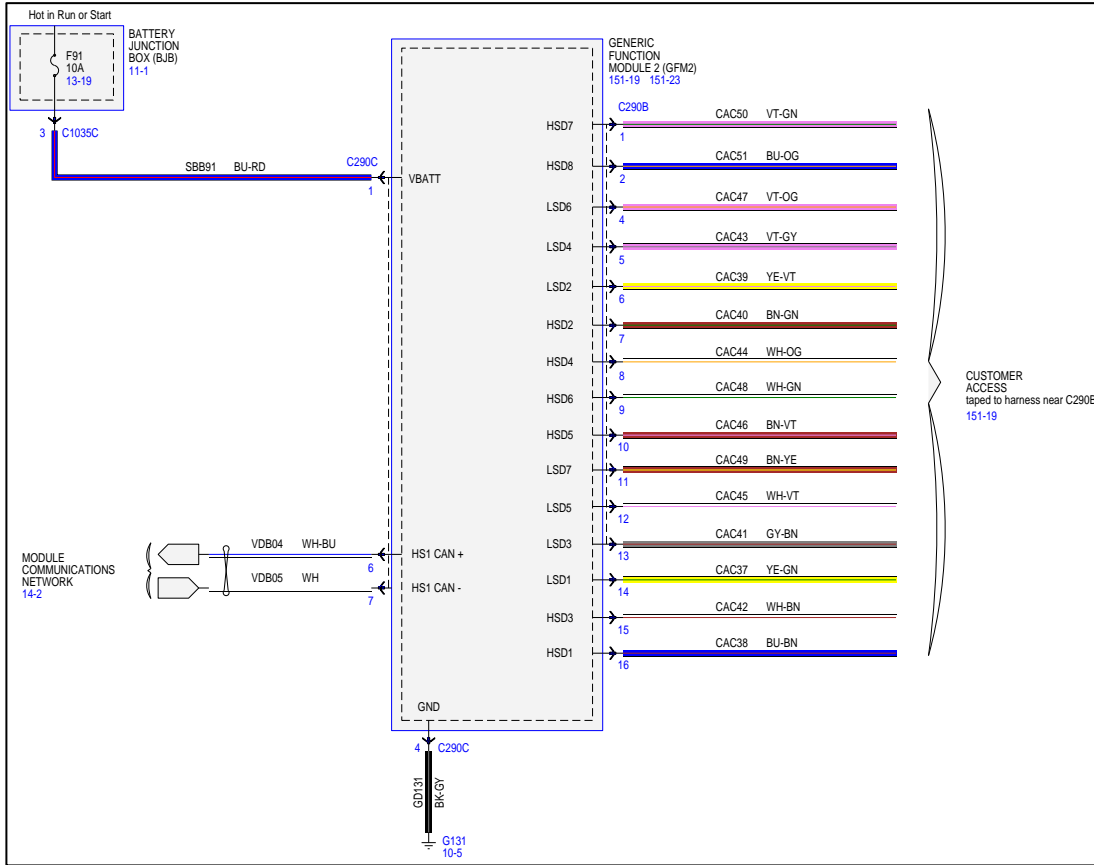
Upfitter Switch Access (Cont.)



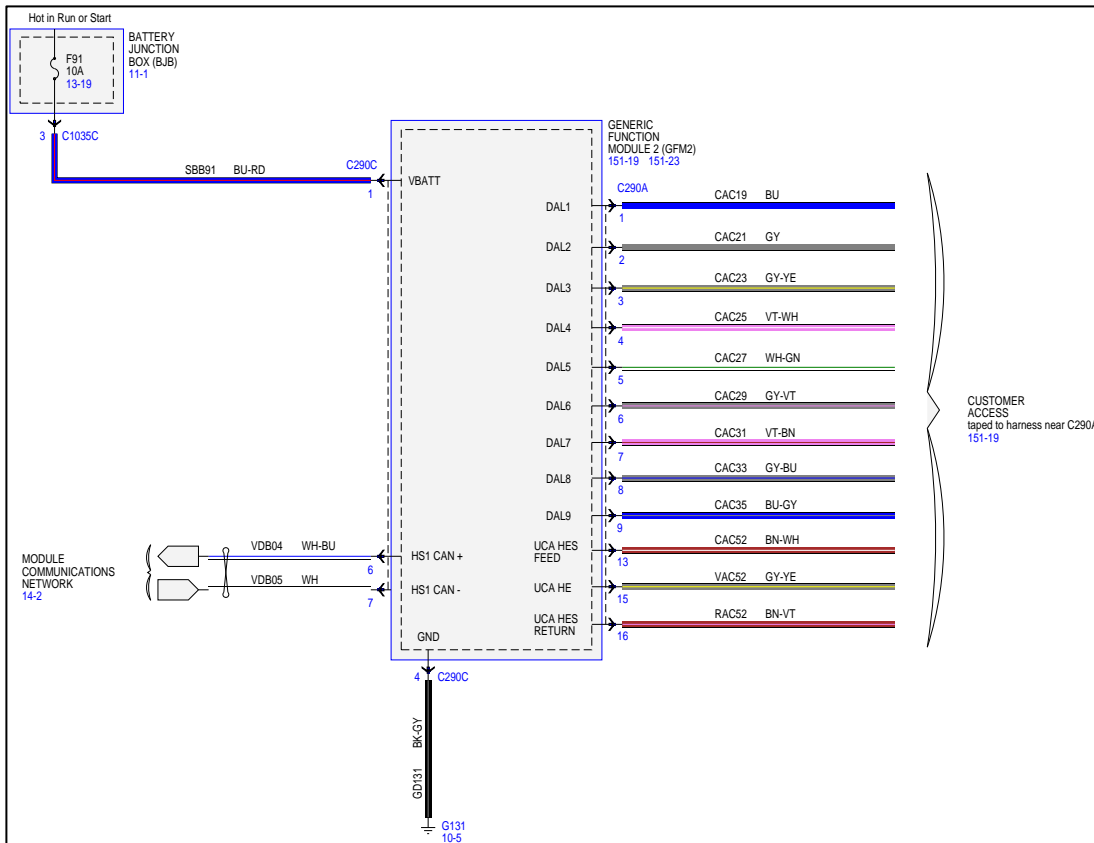
Upfitter Switch Access (Cont.)



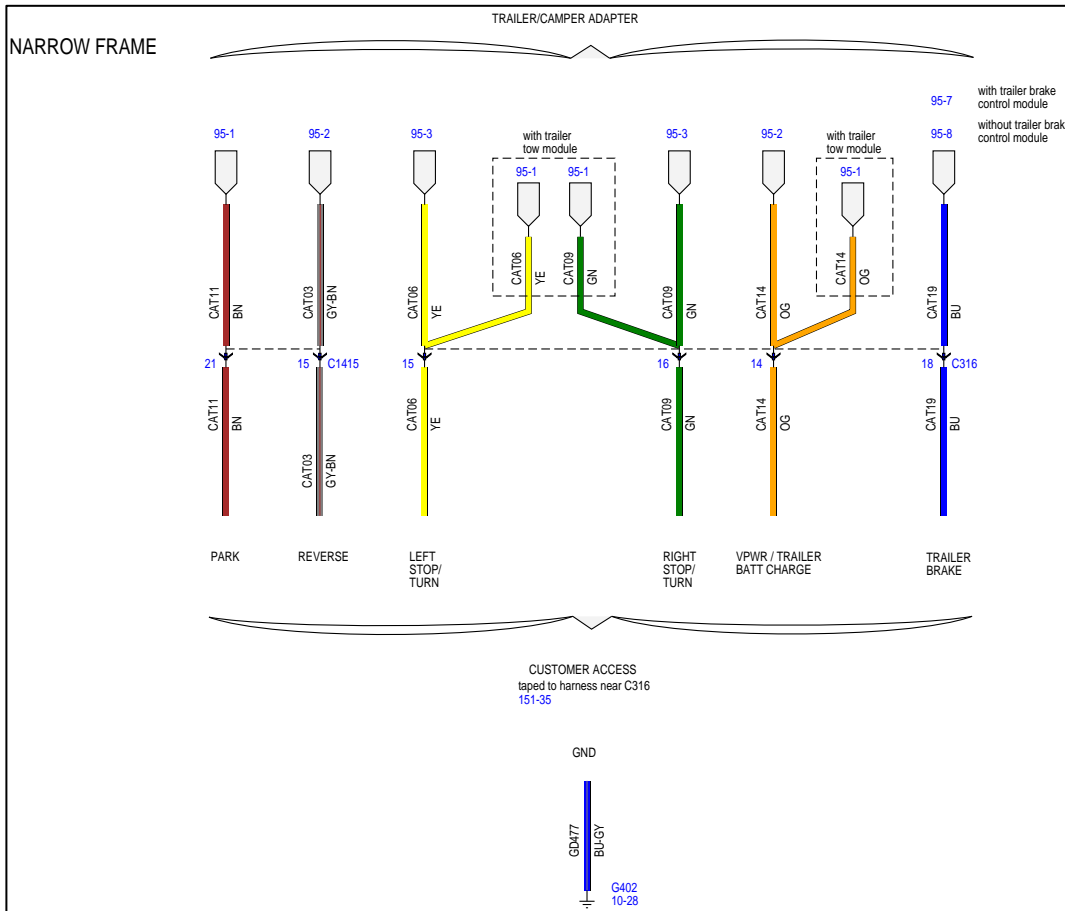
Upfitter Interface Module (UIM) Harness Blunt-cuts (Refer to Q-251 for more information on the UIM)



Upfitter Interface Module Harness Blunt-cuts (Cont.)



Trailer Tow Circuits



Grounds

