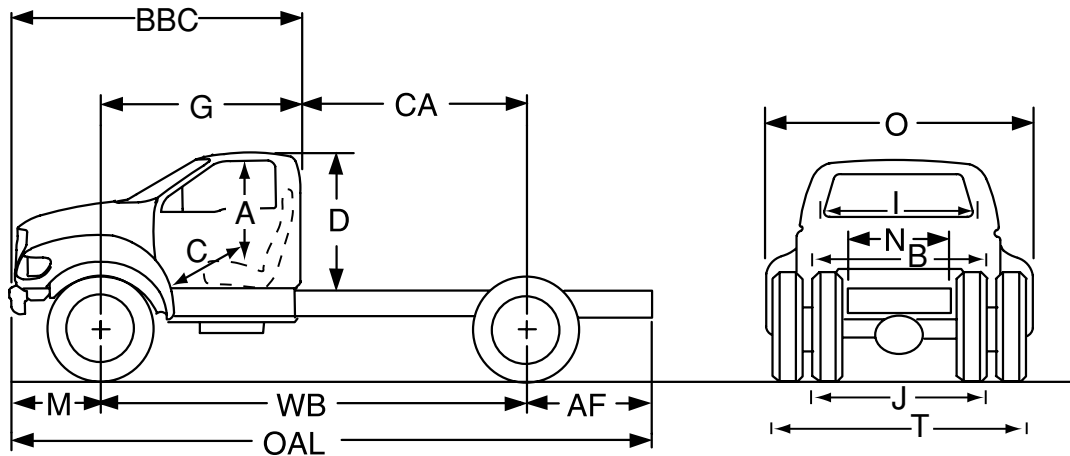


Super Duty Chassis Cabs F-650/F-750

Dimensions

2015



Body Dimensions⁽¹⁾

REGULAR CAB CHASSIS

Wheelbase (in.)	134.0	146.0	158.0	158.0	158.0	176.0	
Code	Description						
CA	Back of Cab to C/L Rear Axle	59.6	71.8	83.6	83.6	83.6	101.7
AF	Axle to End of Frame	39.0	39.0	63.0	39.0	49.0	70.0
OAL	Overall Length	212.2	224.4	260.2	236.2	246.1	285.4
A	Head Room	41.3	41.3	41.3	41.3	41.3	41.3
B	Hip Room	67.4	67.4	67.4	67.4	67.4	67.4
C	Leg Room	40.7	40.7	40.7	40.7	40.7	40.7
D	Frame to Top of Cab	56.6	56.6	56.6	56.6	56.6	56.6
BBC	Front Bumper to Back of Cab	113.0	113.0	113.0	113.0	113.0	113.0
G	C/L Front Axle to Back of Cab	74.0	74.0	74.0	74.0	74.0	74.0
I	Shoulder Room	68.0	68.0	68.0	68.0	68.0	68.0
J	Front Tread Width	80.3	80.3	80.3	80.3	80.3	80.3
M	Front Overhang	39.4	39.4	39.4	39.4	39.4	39.4
N	Width Between Frame Rails	34.0	34.0	34.0	34.0	34.0	34.0
O	Width Over Fenders	96.7	96.7	96.7	96.7	96.7	96.7
T	Rear Tread Width	96.0	96.0	96.0	96.0	96.0	96.0

Wheelbase (in.)	182.0	182.0	194.0	200.0	212.0	
Code	Description					
CA	Back of Cab to C/L Rear Axle	107.6	107.6	119.8	125.7	137.6
AF	Axle to End of Frame	75.0	70.0	75.0	75.0	81.0
OAL	Overall Length	296.5	291.3	308.7	314.6	332.3
A	Head Room	41.3	41.3	41.3	41.3	41.3
B	Hip Room	67.4	67.4	67.4	67.4	67.4
C	Leg Room	40.7	40.7	40.7	40.7	40.7
D	Frame to Top of Cab	56.6	56.6	56.6	56.6	56.6
BBC	Front Bumper to Back of Cab	113.0	113.0	113.0	113.0	113.0
G	C/L Front Axle to Back of Cab	74.0	74.0	74.0	74.0	74.0
I	Shoulder Room	68.0	68.0	68.0	68.0	68.0
J	Front Tread Width	80.3	80.3	80.3	80.3	80.3
M	Front Overhang	39.4	39.4	39.4	39.4	39.4
N	Width Between Frame Rails	34.0	34.0	34.0	34.0	34.0
O	Width Over Fenders	96.7	96.7	96.7	96.7	96.7
T	Rear Tread Width	96.0	96.0	96.0	96.0	96.0

(1) Dimensions are calculated estimates based on engineering measurements.

NOTE: Please see the Major Product Summary pages and/or the Dealer Ordering Guide for availability.

September 2013

esourcebook.dealerconnection.com

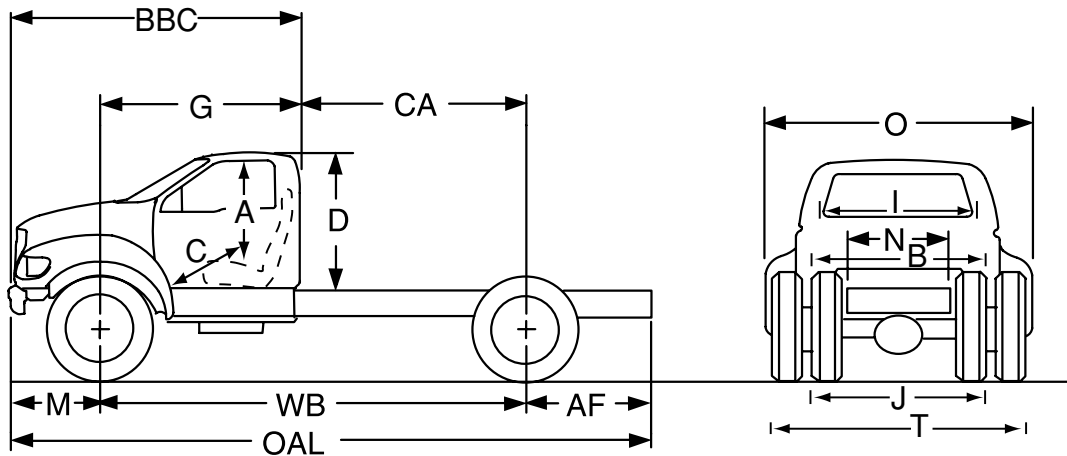
RE&T: 2015 Source Book

SD Chassis Cabs
F-650/F-750

2015

Super Duty Chassis Cabs F-650/F-750

Dimensions cont'd



Body Dimensions⁽¹⁾ REGULAR CAB CHASSIS

Wheelbase (in.)	218.0	224.0	230.0	242.0	260.0	281
Code	Description					
CA	143.9	149.8	155.7	167.9	185.6	207.0
AF	81.0	87.0	87.0	100.0	120.0	120.0
OAL	338.6	350.4	356.3	381.5	419.3	440.0
A	41.3	41.3	41.3	41.3	41.3	41.3
B	67.4	67.4	67.4	67.4	67.4	67.4
C	40.7	40.7	40.7	40.7	40.7	40.7
D	56.6	56.6	56.6	56.6	56.6	56.6
BBC	113.0	113.0	113.0	113.0	113.0	113.0
G	74.0	74.0	74.0	74.0	74.0	74.0
I	68.0	68.0	68.0	68.0	68.0	68.0
J	80.3	80.3	80.3	80.3	80.3	80.3
M	39.4	39.4	39.4	39.4	39.4	39.4
N	34.0	34.0	34.0	34.0	34.0	34.0
O	96.7	96.7	96.7	96.7	96.7	96.7
T	96.0	96.0	96.0	96.0	96.0	96.0

(1) Dimensions are calculated estimates based on engineering measurements.

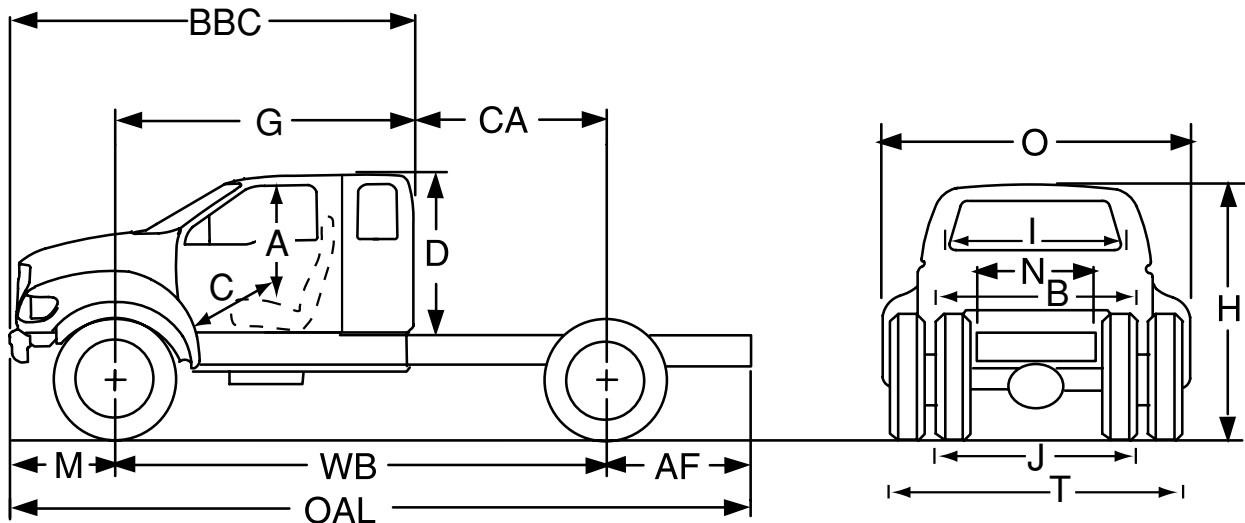
**SD Chassis Cabs
F-650/F-750**

NOTE: Please see the Major Product Summary pages and/or the Dealer Ordering Guide for availability.

Super Duty Chassis Cabs F-650/F-750

Dimensions cont'd

2015



Body Dimensions⁽¹⁾ SUPERCAB CHASSIS

Wheelbase (in.)	155.0	179.0	179.0	179.0	197.0	
Code	Description					
CA	Back of Cab to C/L Rear Axle	60.0	84.1	84.1	84.1	101.8
AF	Axle to End of Frame	39.0	49.0	63.0	39.0	70.0
OAL	Overall Length	233.5	267.3	281.5	257.5	306.3
A	Head Room	41.3	41.3	41.3	41.3	41.3
B	Hip Room	67.4	67.4	67.4	67.4	67.4
C	Leg Room	40.7	40.7	40.7	40.7	40.7
D	Frame to Top of Cab	56.9	56.9	56.9	56.9	56.9
BBC	Front Bumper to Back of Cab	134.4	134.4	134.4	134.4	134.4
G	C/L Front Axle to Back of Cab	95.1	95.1	95.1	95.1	95.1
I	Shoulder Room	68.0	68.0	68.0	68.0	68.0
J	Front Tread Width	80.3	80.3	80.3	80.3	80.3
M	Front Overhang	39.4	39.4	39.4	39.4	39.4
N	Width Between Frame Rails	34.0	34.0	34.0	34.0	34.0
O	Width Over Fenders	96.7	96.7	96.7	96.7	96.7
T	Rear Tread Width	96.0	96.0	96.0	96.0	96.0

Wheelbase (in.)	203.0	203.0	215.0	221.0	233.0	
Code	Description					
CA	Back of Cab to C/L Rear Axle	108.1	108.1	119.9	125.8	138.0
AF	Axle to End of Frame	70.0	75.0	75.0	75.0	81.0
OAL	Overall Length	312.6	317.7	329.5	335.4	353.5
A	Head Room	41.3	41.3	41.3	41.3	41.3
B	Hip Room	67.4	67.4	67.4	67.4	67.4
C	Leg Room	40.7	40.7	40.7	40.7	40.7
D	Frame to Top of Cab	56.9	56.9	56.9	56.9	56.9
BBC	Front Bumper to Back of Cab	134.4	134.4	134.4	134.4	134.4
G	C/L Front Axle to Back of Cab	95.1	95.1	95.1	95.1	95.1
I	Shoulder Room	68.0	68.0	68.0	68.0	68.0
J	Front Tread Width	80.3	80.3	80.3	80.3	80.3
M	Front Overhang	39.4	39.4	39.4	39.4	39.4
N	Width Between Frame Rails	34.0	34.0	34.0	34.0	34.0
O	Width Over Fenders	96.7	96.7	96.7	96.7	96.7
T	Rear Tread Width	96.0	96.0	96.0	96.0	96.0

(1) Dimensions are calculated estimates based on engineering measurements.

NOTE: Please see the Major Product Summary pages and/or the Dealer Ordering Guide for availability.

September 2013

esourcebook.dealerconnection.com

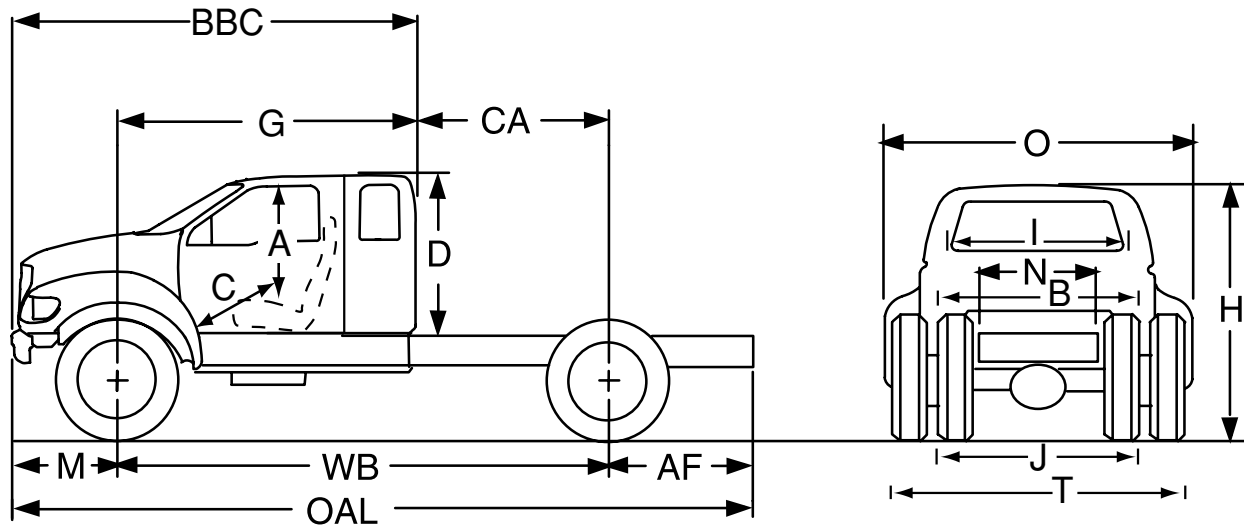
RE&T: 2015 Source Book

SD Chassis Cabs
F-650/F-750

2015

Super Duty Chassis Cabs F-650/F-750

Dimensions cont'd



Body Dimensions⁽¹⁾ SUPERCAB CHASSIS

Wheelbase (in.)	239.0	245.0	251.0	263.0	281.0
Code	Description				
CA	143.9	149.8	156.1	167.9	186.0
AF	81.0	87.0	87.0	100.0	120.0
OAL	359.4	371.3	377.6	402.4	440.6
A	41.3	41.3	41.3	41.3	41.3
B	67.4	67.4	67.4	67.4	67.4
C	40.7	40.7	40.7	40.7	40.7
D	56.9	56.9	56.9	56.9	56.9
BBC	134.4	134.4	134.4	134.4	134.4
G	95.1	95.1	95.1	95.1	95.1
I	68.0	68.0	68.0	68.0	68.0
J	80.3	80.3	80.3	80.3	80.3
M	39.4	39.4	39.4	39.4	39.4
N	34.0	34.0	34.0	34.0	34.0
O	96.7	96.7	96.7	96.7	96.7
T	96.0	96.0	96.0	96.0	96.0

(1) Dimensions are calculated estimates based on engineering measurements.

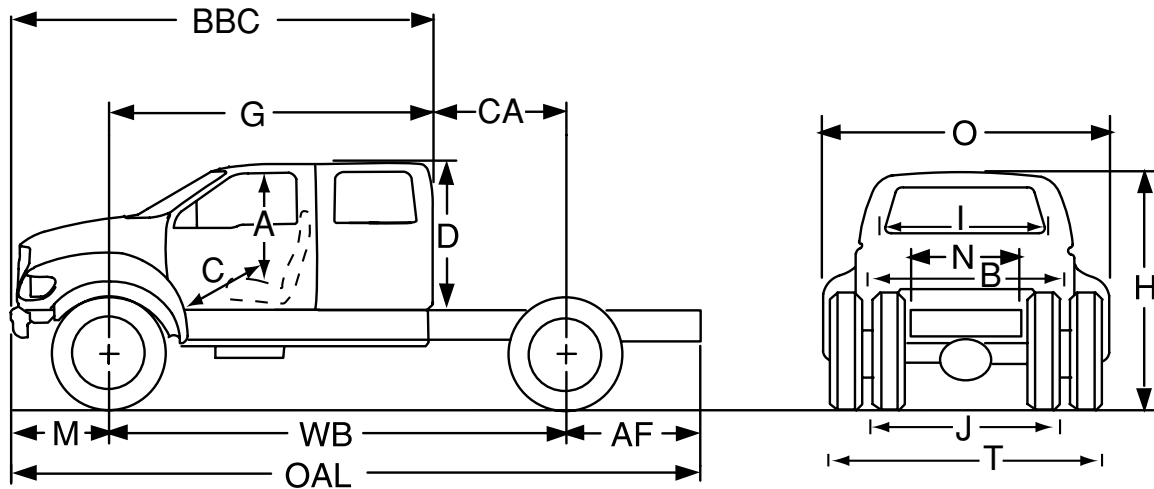
**SD Chassis Cabs
F-650/F-750**

NOTE: Please see the Major Product Summary pages and/or the Dealer Ordering Guide for availability.

Super Duty Chassis Cabs F-650/F-750

Dimensions cont'd

2015



Body Dimensions⁽¹⁾ CREW CAB CHASSIS

Wheelbase (in.)	170.0	194.0	194.0	194.0	212.0
Code Description					
CA Back of Cab to C/L Rear Axle	60.5	84.5	84.5	84.5	102.2
AF Axle to End of Frame	39.0	49.0	63.0	39.0	70.0
OAL Overall Length	248.4	282.3	296.5	272.4	321.3
A Head Room	41.3	41.3	41.3	41.3	41.3
B Hip Room	67.4	67.4	67.4	67.4	67.4
C Leg Room	40.7	40.7	40.7	40.7	40.7
D Frame to Top of Cab	57.5	57.5	57.5	57.5	57.5
BBC Front Bumper to Back of Cab	148.0	148.0	148.0	148.0	148.0
G C/L Front Axle to Back of Cab	109.6	109.6	109.6	109.6	109.6
I Shoulder Room	68.0	68.0	68.0	68.0	68.0
J Front Tread Width	80.3	80.3	80.3	80.3	80.3
M Front Overhang	39.4	39.4	39.4	39.4	39.4
N Width Between Frame Rails	34.0	34.0	34.0	34.0	34.0
O Width Over Fenders	96.7	96.7	96.7	96.7	96.7
T Rear Tread Width	96.0	96.0	96.0	96.0	96.0

Wheelbase (in.)	218.0	218.0	230.0	236.0	248.0
Code Description					
CA Back of Cab to C/L Rear Axle	108.5	108.5	120.3	126.2	138.4
AF Axle to End of Frame	70.0	75.0	75.0	75.0	81.0
OAL Overall Length	327.6	332.7	344.5	350.4	368.5
A Head Room	41.3	41.3	41.3	41.3	41.3
B Hip Room	67.4	67.4	67.4	67.4	67.4
C Leg Room	40.7	40.7	40.7	40.7	40.7
D Frame to Top of Cab	57.5	57.5	57.5	57.5	57.5
BBC Front Bumper to Back of Cab	148.0	148.0	148.0	148.0	148.0
G C/L Front Axle to Back of Cab	109.6	109.6	109.6	109.6	109.6
I Shoulder Room	68.0	68.0	68.0	68.0	68.0
J Front Tread Width	80.3	80.3	80.3	80.3	80.3
M Front Overhang	39.4	39.4	39.4	39.4	39.4
N Width Between Frame Rails	34.0	34.0	34.0	34.0	34.0
O Width Over Fenders	96.7	96.7	96.7	96.7	96.7
T Rear Tread Width	96.0	96.0	96.0	96.0	96.0

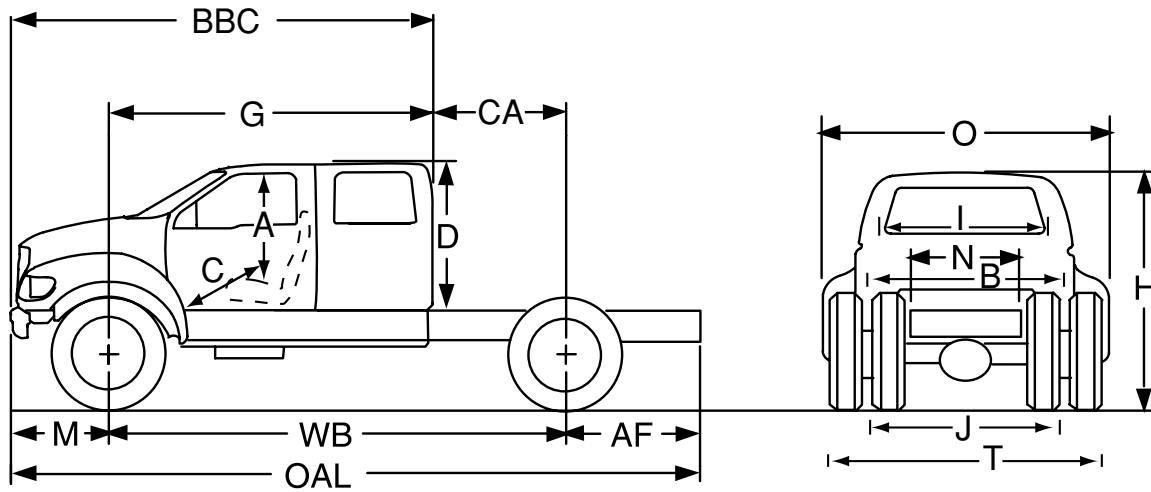
(1) Dimensions are calculated estimates based on engineering measurements.

NOTE: Please see the Major Product Summary pages and/or the Dealer Ordering Guide for availability.

2015

Super Duty Chassis Cabs F-650/F-750

Dimensions cont'd



Body Dimensions⁽¹⁾ CREW CAB CHASSIS

Wheelbase (in.)	254.0	254.0	260.0	266.0	278.0
Code	Description				
CA	144.3	144.3	150.2	156.5	168.3
AF	81.0	96.0	87.0	87.0	100.0
OAL	374.4	389.4	386.2	392.5	417.3
A	41.3	41.3	41.3	41.3	41.3
B	67.4	67.4	67.4	67.4	67.4
C	40.7	40.7	40.7	40.7	40.7
D	57.5	57.5	57.5	57.5	57.5
BBC	148.0	148.0	148.0	148.0	148.0
G	109.6	109.6	109.6	109.6	109.6
I	68.0	68.0	68.0	68.0	68.0
J	80.3	80.3	80.3	80.3	80.3
M	39.4	39.4	39.4	39.4	39.4
N	34.0	34.0	34.0	34.0	34.0
O	96.7	96.7	96.7	96.7	96.7
T	96.0	96.0	96.0	96.0	96.0

(1) Dimensions are calculated estimates based on engineering measurements.

SD Chassis Cabs
F-650/F-750

NOTE: Please see the Major Product Summary pages and/or the Dealer Ordering Guide for availability.

Super Duty Chassis Cabs F-650/F-750

Curb Weights

2015

Diesel Base Curb Weights⁽¹⁾

Series	Model	Wheelbase Range (in.)	Base Curb Weight (lbs.) ⁽²⁾	
F-650 Pro Loader	Regular Cab	134	9363	
		158	9431	
		182	9543	
		194	9566	
		218	9643	
		242	9738	
	SuperCab	155	9571	
		179	9643	
		203	9748	
	Crew Cab	239	9904	
		170	9629	
		194	9762	
		218	9875	
			254	10,069

(1) Includes minimum required and standard equipment, water and oil.

(2) Base curb weights are calculated estimates based on engineering component weights — not actual vehicle weights.

2015

Super Duty Chassis Cabs F-650/F-750

Curb Weights cont'd

Diesel Base Curb Weights cont'd⁽¹⁾

Series	Model	Wheelbase Range (in.)	Base Curb Weight (lbs.) ⁽²⁾	
F-650	Regular Cab	146	10,081/9715 ⁽³⁾	
		158	9626	
		158	9655/9137 ⁽³⁾	
		176	9781/9263 ⁽³⁾	
		182	9796	
		194	9855	
		200	9872/9327 ⁽³⁾	
		212	9921/9403 ⁽³⁾	
		218	9937/9419	
		224	9998/9480 ⁽³⁾	
		230	10,014/9496 ⁽³⁾	
		242	10,103/9585	
		260	10,207/9689 ⁽³⁾	
		SuperCab	179	9843
			179	9870/9325 ⁽³⁾
	197		10,017/9499 ⁽³⁾	
	203		10,005/9487	
	215		10,701/9553 ⁽³⁾	
	221		10,088/10,332 ⁽³⁾	
	233		10,165/9267 ⁽³⁾	
	239		10,202/9684	
	245		10,234/9716 ⁽³⁾	
	251		10,250/9732 ⁽³⁾	
	Crew Cab	263	10,319/9801 ⁽³⁾	
		281	10,423	
		194	9991/9473	
		194	10,019/9501 ⁽³⁾	
		212	10,117/9599 ⁽³⁾	
		218	10,134/9616	
		230	10,229/9711 ⁽³⁾	
		236	10,245/9727 ⁽³⁾	
		248	10,314/9796 ⁽³⁾	
	254	10,330/9812		
	260	10,364/9846 ⁽³⁾		
	266	10,380/9862 ⁽³⁾		
	278	10,448/9862 ⁽³⁾		

(1) Includes minimum required and standard equipment, water and oil.

(2) Base curb weights are calculated estimates based on engineering component weights — not actual vehicle weights.

(3) With 19.5" wheels, badged as Pro Loader.

**SD Chassis Cabs
F-650/F-750**

NOTE: Please see the Major Product Summary pages and/or the Dealer Ordering Guide for availability.

Super Duty Chassis Cabs F-650/F-750

Curb Weights cont'd

2015

Diesel Base Curb Weights cont'd⁽¹⁾

Series	Model	Wheelbase Range (in.)	Base Curb Weight (lbs.) ⁽²⁾
F-750	Regular Cab	146	10,470
		146	10,502
		158	10,022
		158	10,056
		176	10,204
		182	10,224
		194	10,292
		200	10,312
		212	10,371
		218	10,391
		224	10,459
		230	10,478
		242	10,581
		260	10,640
		281	10,747
	SuperCab	179	10,250
		179	10,283
		197	10,452
		203	10,444
		215	10,520
		221	10,540
		233	10,568
		239	10,667
		245	10,707
		251	10,726
	Crew Cab	263	10,809
		281	10,934
		194	10,408
		194	10,441
		212	10,561
		218	10,581
		230	10,685
		236	10,705
248		10,785	
254	10,805		
260	10,844		
266	10,864		

(1) Includes minimum required and standard equipment, water and oil.

(2) Base curb weights are calculated estimates based on engineering component weights — not actual vehicle weights.

NOTE: Please see the Major Product Summary pages and/or the Dealer Ordering Guide for availability.

September 2013

esourcebook.dealerconnection.com

RE&T: 2015 Source Book

2015

Super Duty Chassis Cabs F-650/F-750

Standard Equipment Specifications

REGULAR CHASSIS CAB (134" – 260" WB) – Diesel Engine Models

DRIVE:		F-650 Pro Loader	F-650 Straight Frame
GVWR (lbs.):		22,000/26,000	26,000/29,000
POWERTRAIN:		50-state certified	
Engine	– Type	Cummins® 6.7L ISB I-6 (200 hp @ 2300 rpm, 520 lb.-ft. Torque @ 1600 rpm, 2600 rpm Governed Speed)	
Transmission	– Type	Allison™ 2500 RDS/WR	
	– Speeds	6-speed Automatic Overdrive	
Clutch	– Type	None	
	– Diameter	—	
Front Axle	– Type	Meritor® MFS-08-153B, I-beam Type (Includes Ross TAS-40 Integral Power Steering)	
	– Capacity (Rating @ Ground)	8500 lbs.	8500/10,000 lbs.
Rear Axle	– Type	Meritor MS-17-14X-3DLF Single Reduction with 190 Wheel Ends	Dana S17-140 Single Reduction with GenTech Quiet Gears, Synthetic Lube and 190 Wheel Ends
	– Capacity (Rating @ Ground)	13,500 lbs.	17,500 lbs.
Driveshaft	– Type	SPL-100	SPL-100
BRAKES:			
System	– Type	Hydraulic, Split System, with Automatic Adjustment	
Front	– Type	15.00" x 1.44" Cast Disc	
Rear	– Type	15.00" x 1.44" Cast Disc	
Anti-Lock System		Four-channel Anti-Lock Braking System	
Parking Brake (Rear Brakes)		12" x 3" Rear Axle-mounted Parking Brake (Bosch) DSSA Type with Lever Control	
ELECTRICAL:			
Alternator	– Rating	Leece-Neville 210 Amperes, 1950-watt, Brush Type	
Battery	– Type	Motorcraft® 12-volt Maintenance-free	
	– Rating	Dual, 700 CCA (1400 CCA Total)	
	– Box Location	Right Side Under Cab	
EXHAUST:	– Type	Single Horizontal Aftertreatment Device, Aluminized Steel, Frame-mounted Right Side, Back of Cab	
FUEL TANK:	– Capacity	45.0-gallon, Single, LH Rectangular Steel, Shallow (13" deep)	
STEERING:	– Type	Integral Power, Ross TAS-40	
	– Ratio	20.4:1	
SUSPENSION:			
Frame	– Type	Ladder Type Single Channel – Tapered 80,000 PSI Steel	Ladder Type Single Channel – Straight "C" 50,000 PSI Steel
	– Section Modulus (cu. in.)	10.75	12.64
Shock Absorbers, Front	– Type	1.375" Dia. Double-acting	1.375"
Springs, Front	– Type	3" x 54" Parabolic Taper-leaf	
	– Rating @ Ground (min.)	8500 lbs.	
Springs, Rear	– Type	Multi-leaf, Vari-rate (includes 4500-lb. Auxiliary Rubber Spring)	
	– Rating @ Ground (min.)	13,500 lbs.	18,500 lbs.
WHEEL SEALS:	– Type	Stemco Front and Rear	
TIRES:			
Front	– Type	Continental HSR1 Radial	Continental HSR2
	– Size	245/70R19.5H (16-ply rated)	11R22.5G (14-ply rated)
Rear	– Type	Continental HSR1 Radial	Continental HSR2
	– Size	245/70R19.5H (16-ply rated)	11R22.5G (14-ply rated)
WHEELS:			
Front	– Type	8-hole Steel Disc, Hub-piloted, Powder-coated White	10-hole Steel Disc, Hub-piloted, Powder-coated White
	– Size	19.5" x 6.75"	22.5" x 7.5"
Rear	– Type	8-hole Steel Disc, Hub-piloted, Powder-coated White	10-hole Steel Disc, Hub-piloted, Powder-coated White
	– Size	19.5" x 6.75"	22.5" x 7.5"

NOTE: Please see the Major Product Summary pages and/or the Dealer Ordering Guide for availability.

Super Duty Chassis Cabs F-650/F-750

2015

Standard Equipment Specifications cont'd

SUPERCAB CHASSIS CAB (155" — 281" WB) — Diesel Engine Models

DRIVE:		F-650 Pro Loader	F-650 Straight Frame
GVWR (lbs.):		22,000/26,000	26,000/29,000
POWERTRAIN:		50-state certified	
Engine	— Type	Cummins® 6.7L ISB I-6 (200 hp @ 2300 rpm, 520 lb.-ft. Torque @ 1600 rpm, 2600 rpm Governed Speed)	
Transmission	— Type	Allison™ 2500 RDS/WR	
	— Speeds	6-speed Automatic Overdrive	
Clutch	— Type	None	
	— Diameter	—	
Front Axle	— Type	Meritor® MFS-08-153B, I-beam Type (Includes Ross TAS-40 Integral Power Steering)	
	— Capacity (Rating @ Ground)	8500 lbs.	
Rear Axle	— Type	Meritor MS-17-14X-3DLF Single Reduction with 190 Wheel Ends	Dana S17-140 Single Reduction with GenTech Quiet Gears, Synthetic Lube and 190 Wheel Ends
	— Capacity (Rating @ Ground)	13,500 lbs.	17,500 lbs.
Driveshaft	— Type	SPL-100	SPL-100
BRAKES:			
System	— Type	Hydraulic, Split System, with Automatic Adjustment	
Front	— Type	15.00" x 1.44" Cast Disc	
Rear	— Type	15.00" x 1.44" Cast Disc	
Anti-Lock System		Four-channel Anti-Lock Braking System	
Parking Brake (Rear Brakes)		12" x 3" Rear Axle-mounted Parking Brake (Bosch) DSSA Type with Lever Control	
ELECTRICAL:			
Alternator	— Rating	Leece-Neville 210 Amperes, 1950-watt, Brush Type	
Battery	— Type	Motorcraft® 12-volt Maintenance-free	
	— Rating	Dual, 700 CCA (1400 CCA Total)	
	— Box Location	Right Side Under Cab	
EXHAUST:	— Type	Single Horizontal Aftertreatment Device, Aluminized Steel, Frame-mounted Right Side, Back of Cab	
FUEL TANK:	— Capacity	45.0-gallon, Single, LH Rectangular Steel, Shallow (13" deep)	
STEERING:	— Type	Integral Power, Ross TAS-40	
	— Ratio	20.4:1	
SUSPENSION:			
Frame	— Type	Ladder Type	Ladder Type
		Single Channel — Tapered	Single Channel — Straight "C"
		80,000 PSI Steel	50,000 PSI Steel
	— Section Modulus (cu. in.)	10.75	12.64
Shock Absorbers, Front	— Type	1.375" Dia. Double-acting	
Springs, Front	— Type	3" x 54" Parabolic Taper-leaf	
	— Rating @ Ground (min.)	8500 lbs.	
Springs, Rear	— Type	Multi-leaf, Vari-rate (includes 4500-lb. Auxiliary Rubber Spring)	
	— Rating @ Ground (min.)	13,500 lbs.	18,500 lbs.
WHEEL SEALS:	Type	Stemco Front and Rear	
TIRES:			
Front	— Type	Continental HSR1 Radial	
	— Size	245/70R19.5H (16-ply rated)	11R22.5G (14-ply rated)
Rear	— Type	Continental HSR1 Radial	
	— Size	245/70R19.5H (16-ply rated)	11R22.5G (14-ply rated)
WHEELS:			
Front	— Type	8-hole Steel Disc, Hub-piloted, Powder-coated White	
	— Size	19.5" x 6.75"	22.5" x 7.5"
Rear	— Type	8-hole Steel Disc, Hub-piloted, Powder-coated White	
	— Size	19.5" x 6.75"	22.5" x 7.5"

NOTE: Please see the Major Product Summary pages and/or the Dealer Ordering Guide for availability.

2015

Super Duty Chassis Cabs F-650/F-750

Standard Equipment Specifications cont'd

CREW CAB CHASSIS CAB (170" – 278" WB) – Diesel Engine Models

DRIVE:		F-650 Pro Loader	F-650 Straight Frame
GVWR (lbs.):		22,000/26,000	26,000/29,000
POWERTRAIN:		50-state certified	
Engine	– Type	Cummins® 6.7L ISB I-6 (200 hp @ 2400 rpm, 520 lb.-ft. Torque @ 1600 rpm, 2600 rpm Governed Speed)	
Transmission	– Type	Allison™ 2500 RDS/WR	
	– Speeds	6-speed Automatic Overdrive	
Clutch	– Type	None	
	– Diameter	–	
Front Axle	– Type	Meritor® MFS-08-153B, I-beam Type (Includes Ross TAS-40 Integral Power Steering)	
	– Capacity (Rating @ Ground)	8500 lbs.	
Rear Axle	– Type	Meritor MS-17-14X-3DLF Single Reduction with 190 Wheel Ends	Dana S17-140 Single Reduction with GenTech Quiet Gears, Synthetic Lube and 190 Wheel Ends
	– Capacity (Rating @ Ground)	13,500 lbs.	17,500 lbs.
Driveshaft	– Type	SPL-100	SPL-100
BRAKES:			
System	– Type	Hydraulic, Split System, with Automatic Adjustment	
Front	– Type	15.00" x 1.44" Cast Disc	
Rear	– Type	15.00" x 1.44" Cast Disc	
Anti-Lock System		Four-channel Anti-Lock Braking System	
Parking Brake (Rear Brakes)		12" x 3" Rear Axle-mounted Parking Brake (Bosch) DSSA Type with Lever Control	
ELECTRICAL:			
Alternator	– Rating	Leece-Neville 210 Amperes, 1950-watt, Brush Type	
Battery	– Type	Motorcraft® 12-volt Maintenance-free	
	– Rating	Dual, 700 CCA (1400 CCA Total)	
	– Box Location	Right Side Under Cab	
EXHAUST:	– Type	Single Horizontal Aftertreatment Device, Aluminized Steel, Frame-mounted Right Side, Back of Cab	
FUEL TANK:	– Capacity	45.0-gallon, Single, LH Rectangular Steel, Shallow (13" deep)	
STEERING:	– Type	Integral Power, Ross TAS-40	
	– Ratio	20.4:1	
SUSPENSION:			
Frame	– Type	Ladder Type Single Channel – Tapered 80,000 PSI Steel	Ladder Type Single Channel – Straight "C" 50,000 PSI Steel
	– Section Modulus (cu. in.)	10.75	12.64
Shock Absorbers, Front	– Type	1.375" Dia. Double-acting	1.375"
Springs, Front	– Type	3" x 54" Parabolic Taper-leaf	
	– Rating @ Ground (min.)	8500 lbs.	
Springs, Rear	– Type	Multi-leaf, Vari-rate (includes 4500-lb. Auxiliary Rubber Spring)	
	– Rating @ Ground (min.)	13,500 lbs.	18,500 lbs.
WHEEL SEALS:	Type	Stemco Front and Rear	
TIRES:			
Front	– Type	Continental HSR1 Radial	
	– Size	245/70R19.5H (16-ply rated)	11R22.5G (14-ply rated)
Rear	– Type	Continental HSR1 Radial	
	– Size	245/70R19.5H (16-ply rated)	11R22.5G (14-ply rated)
WHEELS:			
Front	– Type	8-hole Steel Disc, Hub-piloted, Powder-coated White	
	– Size	19.5" x 6.75"	22.5" x 7.5"
Rear	– Type	8-hole Steel Disc, Hub-piloted, Powder-coated White	
	– Size	19.5" x 6.75"	22.5" x 7.5"

NOTE: Please see the Major Product Summary pages and/or the Dealer Ordering Guide for availability.

Super Duty Chassis Cabs F-650/F-750

2015

Standard Equipment Specifications cont'd

REGULAR CHASSIS CAB (146" – 281" WB)

DRIVE:		F-750
GVWR (lbs.):		25,999/37,000
POWERTRAIN:		50-state certified
Engine	– Type	Cummins® 6.7L ISB I-6 (200 hp @ 2300 rpm, 520 lb.-ft. Torque @ 1600 rpm, 2600 rpm Governed Speed)
Transmission	– Type	Allison™ 2500 RDS/WR
	– Speeds	6-speed Automatic Overdrive
Clutch	– Type	None
	– Diameter	–
Front Axle	– Type	Meritor® MFS-10-122A, I-beam Type
	– Capacity (Rating @ Ground)	10,000 lbs.
Rear Axle	– Type	Meritor MS-21-14-XDLF Single Reduction with 190 Wheel Ends
	– Capacity (Rating @ Ground)	21,000 lbs.
Driveshaft	– Type	Spicer® 100
BRAKES:		
System	– Type	Hydraulic, Split System, with Automatic Adjustment
Front	– Type	15.00" x 1.44" Cast Disc
Rear	– Type	15.00" x 1.44" Cast Disc
Anti-Lock System		Four-channel Anti-Lock Braking System
Parking Brake (Rear Brakes)		12" x 3" Rear Axle-mounted Parking Brake (Bosch) DSSA Type with Lever Control
ELECTRICAL:		
Alternator	– Rating	Leece-Neville 210 Amperes, 1950-watt, Brush Type
Battery	– Type	Motorcraft® 12-volt Maintenance-free
	– Rating	Dual, 700 CCA (1400 CCA Total)
	– Box Location	Right Side Under Cab
EXHAUST:	Type	Single Horizontal Aftertreatment Device, Aluminized Steel, Frame-mounted Right Side, Back of Cab
FUEL TANK:	– Capacity	45.0-gallon, Single, LH Rectangular Steel, Shallow (13" deep)
STEERING:	– Type	Integral Power, Ross TAS-66
	– Ratio	20.4:1
SUSPENSION:		
Frame	– Type	Ladder Type Single Channel – Straight "C" 80,000 PSI Steel
	– Section Modulus (cu. in.)	15.14
Shock Absorbers, Front	Type	1.38" Double-acting
Springs, Front	– Type	3" x 54" Parabolic Taper-leaf
	– Rating @ Ground (min.)	10,000 lbs.
Springs, Rear	– Type	Multi-leaf, Vari-rate (includes 4500-lb. Auxiliary Rubber Spring)
	– Rating @ Ground (min.)	23,500 lbs.
WHEEL SEALS:	Type	Stemco Front and Rear
TIRES:		
Front	– Type	Continental HSR2
	– Size	11R22.5G (14-ply rated)
Rear	– Type	Continental HSR2
	– Size	11R22.5G (14-ply rated)
WHEELS:		
Front	– Type	10-hole Steel Disc, Hub-piloted, Powder-coated White
	– Size	22.5" x 7.5"
Rear	– Type	10-hole Steel Disc, Hub-piloted, Powder-coated White
	– Size	22.5" x 7.5"

NOTE: Please see the Major Product Summary pages and/or the Dealer Ordering Guide for availability.

September 2013

esourcebook.dealerconnection.com

RE&T: 2015 Source Book

2015

Super Duty Chassis Cabs F-650/F-750

Standard Equipment Specifications cont'd

SUPERCAB CHASSIS CAB (179" – 281" WB)

DRIVE:		F-750
GVWR (lbs.):		25,999/37,000
POWERTRAIN:		50-state certified
Engine	— Type	Cummins® 6.7L ISB I-6 (200 hp @ 2300 rpm, 520 lb.-ft. Torque @ 1600 rpm, 2600 rpm Governed Speed)
Transmission	— Type	Allison™ 2500 RDS/WR
	— Speeds	6-speed Automatic Overdrive
Clutch	— Type	None
	— Diameter	—
Front Axle	— Type	Meritor® MFS-10-122B, I-beam Type
	— Capacity (Rating @ Ground)	10,000 lbs.
Rear Axle	— Type	Meritor MS-21-14X-3DLF Single Reduction with 190 Wheel Ends
	— Capacity (Rating @ Ground)	21,000 lbs.
Driveshaft	— Type	Spicer® SPL 100
BRAKES:		
System	— Type	Hydraulic, Split System, with Automatic Adjustment
Front	— Type	15.00" x 1.44" Cast Disc
Rear	— Type	15.00" x 1.44" Cast Disc
Anti-Lock System		Four-channel Anti-Lock Braking System
Parking Brake (Rear Brakes)		12" x 3" Rear Axle-mounted Parking Brake (Bosch) DSSA Type
ELECTRICAL:		
Alternator	— Rating	Leece-Neville 210 Amperes, 1950-watt, Brush Type
Battery	— Type	Motorcraft® 12-volt Maintenance-free
	— Rating	Dual, 700 CCA (1400 CCA Total)
	— Box Location	Right Side Under Cab
EXHAUST:	— Type	Single Horizontal Aftertreatment Device, Aluminized Steel, Frame-mounted Right Side, Back of Cab
FUEL TANK:	— Capacity	45.0-gallon, Single, H Rectangular Steel, Shallow (13" deep)
STEERING:	— Type	Integral Power, Ross TAS-66
	— Ratio	20.4:1
SUSPENSION:		
Frame	— Type	Ladder Type Single Channel — Straight "C" 80,000 PSI Steel
	— Section Modulus (cu. in.)	15.14
Shock Absorbers, Front	— Type	1.38" Dia. Double-acting
Springs, Front	— Type	3" x 54" Parabolic Taper-leaf
	— Rating @ Ground (min.)	10,000 lbs.
Springs, Rear	— Type	Multi-leaf, Vari-rate (includes 4500-lb. Auxiliary Rubber Spring)
	— Rating @ Ground (min.)	23,500 lbs.
WHEEL SEALS:	Type	Stemco Front and Rear
TIRES:		
Front	— Type	Continental HSR2
	— Size	11R22.5G (14-ply rated)
Rear	— Type	Continental HSR2
	— Size	11R22.5G (14-ply rated)
WHEELS:		
Front	— Type	10-hole Steel Disc, Hub-piloted, Powder-coated White
	— Size	22.5" x 7.5"
Rear	— Type	10-hole Steel Disc, Hub-piloted, Powder-coated White
	— Size	22.5" x 7.5"

NOTE: Please see the Major Product Summary pages and/or the Dealer Ordering Guide for availability.

Super Duty Chassis Cabs F-650/F-750

2015

Standard Equipment Specifications cont'd

CREW CAB CHASSIS CAB (194" – 266" WB)

DRIVE:		F-750
GVWR (lbs.):		25,999/37,000
POWERTRAIN:		50-state certified
Engine	– Type	Cummins® 6.7L ISB I-6 (200 hp @ 2300 rpm, 520 lb.-ft. Torque @ 1600 rpm, 2600 rpm Governed Speed)
Transmission	– Type	Allison™ 2500 RDS/WR
	– Speeds	6-speed Automatic Overdrive
Clutch	– Type	None
	– Diameter	–
Front Axle	– Type	Meritor® MFS-10-122A, I-beam Type
	– Capacity (Rating @ Ground)	10,000 lbs.
Rear Axle	– Type	Meritor MS-21-14X-3DLF Single Reduction with 190 Wheel Ends
	– Capacity (Rating @ Ground)	21,000 lbs.
Driveshaft	– Type	SPL-100
BRAKES:		
System	– Type	Hydraulic, Split System, with Automatic Adjustment
Front	– Type	15.00" x 1.44" Cast Disc
Rear	– Type	15.00" x 1.44" Cast Disc
Anti-Lock System		Four-channel Anti-Lock Braking System
Parking Brake (Rear Brakes)		12" x 3" Rear Axle-mounted Parking Brake (Bosch) DSSA Type
ELECTRICAL:		
Alternator	– Rating	Leece-Neville 210 Amperes, 1950-watt, Brush Type
Battery	– Type	Motorcraft® 12-volt Maintenance-free
	– Rating	Dual, 700 CCA (1400 CCA Total)
	– Box Location	Right Side Under Cab
EXHAUST:	– Type	Single Horizontal Aftertreatment Device, Aluminized Steel, Frame-mounted Right Side, Back of Cab
FUEL TANK:	– Capacity	45.0-gallon, Single, LH Rectangular Steel, Shallow (13" deep)
STEERING:	– Type	Integral Power, Ross TAS-66
	– Ratio	20.4:1
SUSPENSION:		
Frame	– Type	Ladder Type Single Channel – Straight "C" 80,000 PSI Steel
	– Section Modulus (cu. in.)	15.14
Shock Absorbers, Front	– Type	1.375" Double-acting
Springs, Front	– Type	3" x 54" Parabolic Taper-leaf
	– Rating @ Ground (min.)	10,000 lbs.
Springs, Rear	– Type	Multi-leaf, Vari-rate (includes 4500-lb. Auxiliary Rubber Spring)
	– Rating @ Ground (min.)	23,500 lbs.
WHEEL SEALS:	– Type	Stemco Front and Rear
TIRES:		
Front	– Type	Continental HSR2
	– Size	11R22.5G (14-ply rated)
Rear	– Type	Continental HSR2
	– Size	11R22.5G (14-ply rated)
WHEELS:		
Front	– Type	10-hole Steel Disc, Hub-piloted, Powder-coated White
	– Size	22.5" x 7.5"
Rear	– Type	10-hole Steel Disc, Hub-piloted, Powder-coated White
	– Size	22.5" x 7.5"

NOTE: Please see the Major Product Summary pages and/or the Dealer Ordering Guide for availability.

2015

Super Duty Chassis Cabs F-650/F-750

Standard Equipment Specifications cont'd

REGULAR CHASSIS CAB (158" – 260" WB) – Gasoline Engine Models

DRIVE:		F-650 Pro Loader	F-650 Straight Frame
GVWR (lbs.):		22,000/26,000	26,000/30,000
POWERTRAIN:		50-state certified	
Engine	– Type	Ford 6.8L V10 (362 hp @ 4750 rpm, 457 lb.-ft. of Torque @ 3250 rpm)	
Transmission	– Type	Ford Heavy-duty TorqShift	
	– Speeds	6-speed Automatic Overdrive	
Clutch	– Type	None	
	– Diameter	–	
Front Axle	– Type	Meritor® MFS-08-153B, I-beam Type (Includes Ross TAS-40 Integral Power Steering)	
	– Capacity (Rating @ Ground)	8500 lbs.	8500/10,000 (optional) lbs.
Rear Axle	– Type	Meritor MS-17-14X-3DLF Single Reduction with 190 Wheel Ends	Dana Spicer® S17-140 Single Reduction with GenTech Quiet Gears, Synthetic Lube and 190 Wheel Ends
	– Capacity (Rating @ Ground)	13,500 lbs.	17,500 lbs.
Driveshaft	– Type	SPL-100	SPL-100
BRAKES:			
System	– Type	Hydraulic, Split System, with Automatic Adjustment	
Front	– Type	15.00" x 1.44" Cast Disc	
Rear	– Type	15.00" x 1.44" Cast Disc	
Anti-Lock System		Four-channel Anti-Lock Braking System	
Parking Brake (Rear Brakes)		12" x 3" Rear Axle-mounted Parking Brake (Bosch) DSSA Type with Lever Control	
ELECTRICAL:			
Alternator	– Rating	Denso, 177 Amperes	
Battery	– Type	Motorcraft® 12-volt Maintenance-free	
	– Rating	900 CCA	
	– Box Location	Right Side Under Cab	
EXHAUST:	– Type	Single Horizontal Muffler, Catalytic Converter, Frame-mounted Right Side, Back of Cab, Downward-facing Outlet Tip	
FUEL TANK:	– Capacity	42.0-gallon, Single, LH Rectangular Steel, Shallow (13" deep)	
STEERING:	– Type	Integral Power, Ross TAS-40	
	– Ratio	20.4:1	
SUSPENSION:			
Frame	– Type	Ladder Type Single Channel – Tapered 80,000 PSI Steel	Ladder Type Single Channel – Straight "C" 50,000 PSI Steel
	– Section Modulus (cu. in.)	10.75	12.64
Shock Absorbers, Front	– Type	1.375" Dia. Double-acting	
Springs, Front	– Type	3" x 54" Parabolic Taper-leaf	
	– Rating @ Ground (min.)	8500 lbs.	
Springs, Rear	– Type	Multi-leaf, Vari-rate (includes 4500-lb. Auxiliary Rubber Spring)	
	– Rating @ Ground (min.)	17,500 lbs.	18,500 lbs.
WHEEL SEALS:	– Type	Stemco Front and Rear	
TIRES:			
Front	– Type	Continental HSR1 Radial	Continental HSR2
	– Size	245/70R19.5H (16-ply rated)	11R22.5G (14-ply rated)
Rear	– Type	Continental HSR1 Radial	Continental HSR2
	– Size	245/70R19.5H (16-ply rated)	11R22.5G (14-ply rated)
WHEELS:			
Front	– Type	8-hole Steel Disc, Hub-piloted, Powder-coated White	10-hole Steel Disc, Hub-piloted, Powder-coated White
	– Size	19.5" x 6.75"	22.5" x 7.5"
Rear	– Type	8-hole Steel Disc, Hub-piloted, Powder-coated White	10-hole Steel Disc, Hub-piloted, Powder-coated White
	– Size	19.5" x 6.75"	22.5" x 7.5"

NOTE: Please see the Major Product Summary pages and/or the Dealer Ordering Guide for availability.

Super Duty Chassis Cabs F-650/F-750

2015

Standard Equipment Specifications cont'd

SUPERCAB CHASSIS CAB (179" — 281" WB) — Gasoline Engine Models

DRIVE:		F-650 Pro Loader	F-650 Straight Frame
GVWR (lbs.):		22,000/26,000	26,000/30,000
POWERTRAIN:		50-state certified	
Engine	— Type	Ford 6.8L V10 (362 hp @ 4750 rpm, 457 lb.-ft. of Torque @ 3250 rpm)	
Transmission	— Type	Ford Heavy-duty TorqShift	
	— Speeds	6-speed Automatic Overdrive	
Clutch	— Type	None	
	— Diameter	—	
Front Axle	— Type	Meritor® MFS-08-153B, I-beam Type (Includes Ross TAS-40 Integral Power Steering)	
	— Capacity (Rating @ Ground)	8500 lbs.	
Rear Axle	— Type	Meritor MS-17-14X-3DLF Single Reduction with 190 Wheel Ends	Dana Spicer® S17-140 Single Reduction with GenTech Quiet Gears, Synthetic Lube and 190 Wheel Ends
	— Capacity (Rating @ Ground)	13,500 lbs.	17,500 lbs.
Driveshaft	— Type	SPL-100	SPL-100
BRAKES:			
System	— Type	Hydraulic, Split System, with Automatic Adjustment	
Front	— Type	15.00" x 1.44" Cast Disc	
Rear	— Type	15.00" x 1.44" Cast Disc	
Anti-Lock System		Four-channel Anti-Lock Braking System	
Parking Brake (Rear Brakes)		12" x 3" Rear Axle-mounted Parking Brake (Bosch) DSSA Type with Lever Control	
ELECTRICAL:			
Alternator	— Rating	Denso, 177 Amperes	
Battery	— Type	Motorcraft® 12-volt Maintenance-free	
	— Rating	900 CCA	
	— Box Location	Right Side Under Cab	
EXHAUST:	— Type	Single Horizontal Muffler, Catalytic Converter, Frame-mounted Right Side, Back of Cab, Downward-facing Outlet Tip	
FUEL TANK:	— Capacity	42.0-gallon, Single, LH Rectangular Steel, Shallow (13" deep)	
STEERING:	— Type	Integral Power, Ross TAS-40	
	— Ratio	20.4:1	
SUSPENSION:			
Frame	— Type	Ladder Type Single Channel — Tapered 80,000 PSI Steel	Ladder Type Single Channel — Straight "C" 50,000 PSI Steel
	— Section Modulus (cu. in.)	10.75	12.64
Shock Absorbers, Front	— Type	1.375" Dia. Double-acting	
Springs, Front	— Type	3" x 54" Parabolic Taper-leaf	
	— Rating @ Ground (min.)	8500 lbs.	
Springs, Rear	— Type	Multi-leaf, Vari-Rate (includes 4500-lb. Auxiliary Rubber Spring)	
	— Rating @ Ground (min.)	17,500 lbs.	18,500 lbs.
WHEEL SEALS:	Type	Stemco Front and Rear	
TIRES:			
Front	— Type	Continental HSR1 Radial	
	— Size	245/70R19.5H (16-ply rated)	11R22.5G (14-ply rated)
Rear	— Type	Continental HSR1 Radial	
	— Size	245/70R19.5H (16-ply rated)	11R22.5G (14-ply rated)
WHEELS:			
Front	— Type	8-hole Steel Disc, Hub-piloted, Powder-coated White	
	— Size	19.5" x 6.75"	22.5" x 7.5"
Rear	— Type	8-hole Steel Disc, Hub-piloted, Powder-coated White	
	— Size	19.5" x 6.75"	22.5" x 7.5"

NOTE: Please see the Major Product Summary pages and/or the Dealer Ordering Guide for availability.

Revised January 2014

esourcebook.dealerconnection.com

RE&T: 2015 Source Book

SD Chassis Cabs
F-650/F-750

2015

Super Duty Chassis Cabs F-650/F-750

Standard Equipment Specifications cont'd

CREW CAB CHASSIS CAB (194" – 278" WB) — Gasoline Engine Models

DRIVE:		F-650 Pro Loader	F-650 Straight Frame
GVWR (lbs.):		22,000/26,000	26,000/30,000
POWERTRAIN:		50-state certified	
Engine	— Type	Ford 6.8L V10 (362 hp @ 4750 rpm, 457 lb.-ft. of Torque @ 3250 rpm)	
Transmission	— Type	Ford Heavy-duty TorqShift	
	— Speeds	6-speed Automatic Overdrive	
Clutch	— Type	None	
	— Diameter	—	
Front Axle	— Type	Meritor® MFS-08-153B, I-beam Type (Includes Ross TAS-40 Integral Power Steering)	
	— Capacity (Rating @ Ground)	8500 lbs.	
Rear Axle	— Type	Meritor MS-17-14X-3DLF Single Reduction with 190 Wheel Ends	Dana Spicer® S17-140 Single Reduction with GenTech Quiet Gears, Synthetic Lube and 190 Wheel Ends
	— Capacity (Rating @ Ground)	13,500 lbs.	17,500 lbs.
Driveshaft	— Type	SPL-100	SPL-100
BRAKES:			
System	— Type	Hydraulic, Split System, with Automatic Adjustment	
Front	— Type	15.00" x 1.44" Cast Disc	
Rear	— Type	15.00" x 1.44" Cast Disc	
Anti-Lock System		Four-channel Anti-Lock Braking System	
Parking Brake (Rear Brakes)		12" x 3" Rear Axle-mounted Parking Brake (Bosch) DSSA Type with Lever Control	
ELECTRICAL:			
Alternator	— Rating	Denso, 177 Amperes	
Battery	— Type	Motorcraft® 12-volt Maintenance-free	
	— Rating	900 CCA	
	— Box Location	Right Side Under Cab	
EXHAUST:	— Type	Single Horizontal Muffler, Catalytic Converter, Frame-mounted Right Side, Back of Cab, Downward-facing Outlet Tip	
FUEL TANK:	— Capacity	60.0-gallon, Single, LH Rectangular Steel, Shallow (13" deep)	
STEERING:	— Type	Integral Power, Ross TAS-40	
	— Ratio	20.4:1	
SUSPENSION:			
Frame	— Type	Ladder Type Single Channel — Tapered 80,000 PSI Steel	Ladder Type Single Channel — Straight "C" 50,000 PSI Steel
	— Section Modulus (cu. in.)	10.75	12.64
Shock Absorbers, Front	— Type	1.375" Dia. Double-acting	
Springs, Front	— Type	3" x 54" Parabolic Taper-leaf	
	— Rating @ Ground (min.)	8500 lbs.	
Springs, Rear	— Type	Multi-leaf, Vari-rate (includes 4500-lb. Auxiliary Rubber Spring)	
	— Rating @ Ground (min.)	17,500 lbs.	18,500 lbs.
WHEEL SEALS:	Type	Stemco Front and Rear	
TIRES:			
Front	— Type	Continental HSR1 Radial	
	— Size	245/70R19.5H (16-ply rated)	
Rear	— Type	Continental HSR1 Radial	
	— Size	245/70R19.5H (16-ply rated)	
Front	— Type	Continental HSR2	
	— Size	11R22.5G (14-ply rated)	
Rear	— Type	Continental HSR2	
	— Size	11R22.5G (14-ply rated)	
WHEELS:			
Front	— Type	8-hole Steel Disc, Hub-piloted, Powder-coated White	
	— Size	19.5" x 6.75"	
Rear	— Type	10-hole Steel Disc, Hub-piloted, Powder-coated White	
	— Size	22.5" x 7.5"	
Front	— Type	8-hole Steel Disc, Hub-piloted, Powder-coated White	
	— Size	19.5" x 6.75"	
Rear	— Type	10-hole Steel Disc, Hub-piloted, Powder-coated White	
	— Size	22.5" x 7.5"	

NOTE: Please see the Major Product Summary pages and/or the Dealer Ordering Guide for availability.

Super Duty Chassis Cabs F-650/F-750

Technical Specifications

2015

Axles

FRONT AXLE SPECIFICATIONS

Regular/Super/Crew Cab Chassis Model		43A	43B	43C	43D	43E
Manufacturer		Dana/Spicer®	Dana/Spicer	Dana/Spicer	Dana/Spicer	Dana/Spicer
Max. Rating @ Ground (lbs.)		8,500	10,000	12,000	13,200	14,000
Axle	— Type	I-beam w/ Kingpin Spindles	I-beam w/ Kingpin Spindles	I-beam w/ Kingpin Spindles	I-beam w/ Kingpin Spindles	I-beam w/ Kingpin Spindles
	— Material	Forged Steel	Forged Steel	Forged Steel	Forged Steel	Forged Steel
	— Spring Centers (in.)	35.0	35.0	35.0	35.0	35.0
Kingpins	— Bushing Material	Bronze	Bronze	Bronze	Bronze	Bronze
Spindle	— Material	Steel	Steel	Steel	Steel	Steel
Wheel Bearings	— Type	Tapered Roller	Tapered Roller	Tapered Roller	Tapered Roller	Tapered Roller

Regular/Super/Crew Cab Chassis/Model		43G	43H	43J	43K	43M
Manufacturer		Meritor®	Meritor	Meritor	Meritor	Meritor
Max. Rating @ Ground (lbs.)		8,500	10,000	12,000	13,200	14,000
Axle	— Type	I-beam w/ Kingpin Spindles	I-beam w/ Kingpin Spindles	I-beam w/ Kingpin Spindles	I-beam w/ Kingpin Spindles	I-beam w/ Kingpin Spindles
	— Material	Forged Steel	Forged Steel	Forged Steel	Forged Steel	Forged Steel
	— Spring Centers (in.)	35.0	35.0	35.0	35.0	35.0
Kingpins	— Bushing Material	Bronze	Bronze	Bronze	Bronze	Bronze
Spindle	— Material	Steel	Steel	Steel	Steel	Steel
Wheel Bearings	— Type	Tapered Roller	Tapered Roller	Tapered Roller	Tapered Roller	Tapered Roller

REAR AXLE SPECIFICATIONS

Regular/Super/Crew Cab Chassis/Model		47G	47H	47L	47M	47N
Make		Dana/Spicer	Dana/Spicer	Dana/Spicer	Dana/Spicer	Dana/Spicer
Max. Rating @ Ground (lbs.)		21,000	21,000	19,000	23,000	23,000
Type		Single	Single	Single	2-speed	Single
Housing — Type		Fabricated	Fabricated	Fabricated	Fabricated	Fabricated
Lubricant Capacity (pt.)		28.0	28.0	28.0	37.0	39.0
Wheel Bearings	— Type	Tapered	Tapered	Tapered	Tapered	Tapered
	— Gears	Hypoid	Hypoid	GenTech	Hypoid	Hypoid
Ring Gear	— Pitch Diameter (in.)	14.79–15.55	14.79–15.55	15.40	18.00	16.91–17.25
Differential	— Type		Driver Control — Locking			
Axle Shaft	— Minimum Diameter (in.)	2.00	2.10	2.00	2.31	2.06
	— No. of Splines (Hub End)	39	41	39	36	44

NOTE: Please see the Major Product Summary pages and/or the Dealer Ordering Guide for availability.

2015

Super Duty Chassis Cabs F-650/F-750

Technical Specifications cont'd

REAR AXLE SPECIFICATIONS cont'd

Regular/Super/Crew Cab Chassis/Model		47P	47Q	47R	47S	47T
Make		Dana/Spicer®	Dana/Spicer	Dana/Spicer	Meritor®	Meritor
Max. Rating @ Ground (lbs.)		23,000	17,500	21,000	23,000	23,000
Type		Single	Single	2-speed	Single	Single
Housing	— Type	Fabricated	Fabricated	Fabricated	Fabricated	Fabricated
Lubricant Capacity (pt.)		39.0	28.0	35.0	37.0	40.0
Wheel Bearings	— Type	Tapered	Tapered	Tapered	Tapered	Tapered
Gears	— Type	Hypoid	GenTech	Hypoid	Hypoid	Hypoid
Ring Gear	— Pitch Diameter (in.)	16.91–17.25	15.4	17.00	18.00	18.00
Differential	— Type	Driver Control — Locking				Driver Control — Locking
Axle Shaft	— Minimum Diameter (in.)	2.06	2.10	1.84	2.35	2.35
	— No. of Splines (Hub End)	36	41	39	46	46

Regular/Super/Crew Cab Chassis/Model		47V	471	472	473	474
Make		Meritor	Meritor	Meritor	Meritor	Meritor
Max. Rating @ Ground (lbs.)		21,000	13,500	17,500	17,500	19,000
Type		2-speed	Single	Single	Single	Single
Housing	— Type	Fabricated	Fabricated	Fabricated	Fabricated	Fabricated
Lubricant Capacity (pt.)		40.0	40.0	40.0	40.0	40.0
Wheel Bearings	— Type	Tapered	Tapered	Tapered	Tapered	Tapered
Gears	— Type	Hypoid	Hypoid	Quiet Gear	Hypoid	Hypoid
Ring Gear	— Pitch Diameter (in.)	16.00	15.31	15.31	15.31	15.31
Differential	— Type					
Axle Shaft	— Minimum Diameter (in.)	2.00	2.00	2.00	2.00	2.35
	— No. of Splines (Hub End)	39	39	39	39	46

Regular/Super/Crew Cab Chassis/Model		475	476	477	478	479
Make		Meritor	Meritor	Meritor	Meritor	Meritor
Max. Rating @ Ground (lbs.)		21,000	21,000	19,000	15,500	23,000
Type		2-speed	Single	Single	Single	2-speed
Housing	— Type	Fabricated	Fabricated	Fabricated	Fabricated	Fabricated
Lubricant Capacity (pt.)		40.0	40.0	40.0	40.0	40.0
Wheel Bearings	— Type	Tapered	Tapered	Tapered	Tapered	Tapered
Gears	— Type	Hypoid	Hypoid	Quiet Gear	Hypoid	Hypoid
Ring Gear	— Pitch Diameter (in.)	15.31	15.31	15.31	15.31	18.00
Differential	— Type	Driver Control — Locking				
Axle Shaft	— Minimum Diameter (in.)	2.10	2.10	2.00	2.00	2.35
	— No. of Splines (Hub End)	41	41	39	39	46

NOTE: Please see the Major Product Summary pages and/or the Dealer Ordering Guide for availability.

Super Duty Chassis Cabs F-650/F-750

Technical Specifications cont'd

2015

Brakes

HYDRAULIC BRAKE EQUIPMENT SPECIFICATIONS — FRONT/REAR DISC

Type	Axle (lbs.)	Rotor Dia. (in.)		Lining Thickness (in.)	Caliper Piston No. Dia.	Lining Area Per Axle/ Wheel (sq. in.)	Total Swept Area Per Axle (sq. in.)
		OD Thickness					
Front	8,500	15.00 x 1.44		.49	4/70 mm (2.8")	41.7	41.7
	10,000/12,000/13,200	15.00 x 1.44		.74	4/70 mm (2.8")	41.7	41.7
Rear	15,500 ⁽¹⁾	15.00 x 1.44		.49	4/70 mm (2.8")	41.7	83.4
	17,500/19,000/21,000/23,000	15.00 x 1.44		.74	4/70 mm (2.8")	41.7	83.4

(1) 4/64 mm on rear with 19.5" tire option.

AIR BRAKE EQUIPMENT SPECIFICATIONS — FRONT DRUM

Type	Axle (lbs.)	Shoe/Pad Length x Width (in.)	Lining Thickness (in.)	Drum Area Per Axle (sq. in.)	Chamber Diaphragm Area (sq. in.)	Dust Shield
Meritor®/Q-Plus S-Cam	8,500	15.00 x 4.00	.73	230	20	Removable
	10,000/ 12,000/ 13,200					
	14,000	16.50 x 7.00	.73	420	20	Removable

AIR BRAKE EQUIPMENT SPECIFICATIONS — REAR DRUM

Type	Axle (lbs.)	Shoe/Pad Length x Width (in.)	Lining Thickness (in.)	Drum Area Per Axle (sq. in.)	Chamber Diaphragm Area (sq. in.)	Dust Shield
Meritor/Q-Plus S-Cam	17,500	15.00 x 8.63	.85	440	30	Removable
	19,000/ 21,000/ 23,000	16.50 x 7.00	.85	440	30	Removable

NOTE: Please see the Major Product Summary pages and/or the Dealer Ordering Guide for availability.

2015

Super Duty Chassis Cabs F-650/F-750

Technical Specifications cont'd

Brakes cont'd

HYDRAULIC BRAKE BOOSTER SPECIFICATIONS

Type	Model/Series	Booster Stroke (in.)
Wabco/Full Power	All	2.468

AIR COMPRESSOR SPECIFICATIONS

Make/Mode	CFM	Compressor Size (Bore x Stroke) (in.)	Cooling	Lubrication	Drive
Cummins®	18.7	2.780 x 1.580	Water	Engine Oil	Gear

AIR BRAKE AIR DRYER SPECIFICATIONS

Make/Model	Dimensions Height x Diam. (in.)	Weight	Remarks
Bendix®/AD-IP	12.0 x 8.0	24 lbs.	Heated, Internal Purge

AIR BRAKE SLACK ADJUSTER SPECIFICATIONS

Axle	Make	Description
Front and Rear	Meritor®	5.5" length

Bumpers

BUMPER SPECIFICATIONS

Trim Level	Size	Material	Finish
XL	Full-width	0.1875" thick steel	Painted, Dark Shadow Gray
XLT	Full-width	0.1875" thick steel	Plated, Chrome

Cooling Systems

COOLING SYSTEM SPECIFICATIONS

Engine	Trans.	Radiator Area (sq. in.)	Core Thickness (in.)	Total Number of Tubes	Fins Per Inch	System Capacity Qts. (liters)	Fan Blades	Blade Dia. (in.)	Clutch Type
Cummins	All	717	2.20	128	16	30.0 (28.4)	9	26.0	Viscous
Ford V10	Ford	708	2.20	124	16	26.3 (24.9)	8	20.0	Viscous

AIR CONDITIONING SPECIFICATIONS

Make	Refrigerant	Compressor	Condenser Location	Evaporator Location
Ford	R-134A	Sanden	Radiator-mounted	RH Under Instrument Panel

HEATER AND DEFROSTER SPECIFICATIONS

Make	Blower Motor	Heater Core Location	Air Intake	Water Shutoff to Heat
Ford	7-speed, Wired to Ignition	In-cab, RH Side	Fresh Air; Top of Cowl	None

NOTE: Please see the Major Product Summary pages and/or the Dealer Ordering Guide for availability.

Super Duty Chassis Cabs F-650/F-750

Technical Specifications cont'd

2015

Fuel System

FUEL SYSTEM DATA

Engine	Injection Method	Fuel Pump/Location	Fuel Filter/Location	Air Cleaner
Cummins® 6.7L	Direct, High-pressure Pump	Mechanical/Engine-mounted	Spin-on/Cylinder Head	Dry Type
Ford 6.8L	SEFI	Fuel Tank	In-tank	Dry Type

Steering

STEERING SPECIFICATIONS

Cab Style	Wheelbase	Type	Gear Ratio	F-650 Pro Loader		F-650 Turning		F-750 Turning	
				Turning Radius w/Bumper	Clearance	Radius w/Bumper	Clearance	Radius w/Bumper	Clearance
Regular Cab	134	Integral	20.4:1	20 ft. 1 in.	21 ft. 5 in.				
	146							20 ft. 11 in.	22 ft. 4 in.
	158			23 ft. 0 in.	24 ft. 4 in.	23 ft. 0 in.	24 ft. 4 in.	22 ft. 5 in.	23 ft. 9 in.
	176					25 ft. 3 in.	26 ft. 8 in.	24 ft. 7 in.	26 ft. 0 in.
	182			26 ft. 0 in.	27 ft. 5 in.	26 ft. 0 in.	27 ft. 5 in.	25 ft. 4 in.	26 ft. 9 in.
	194			27 ft. 6 in.	28 ft. 11 in.	27 ft. 6 in.	28 ft. 11 in.	26 ft. 10 in.	28 ft. 2 in.
	200					28 ft. 3 in.	29 ft. 8 in.	27 ft. 6 in.	28 ft. 11 in.
	212					28 ft. 6 in.	29 ft. 10 in.	29 ft. 0 in.	30 ft. 5 in.
	218			29 ft. 2 in.	30 ft. 7 in.	29 ft. 2 in.	30 ft. 7 in.	29 ft. 9 in.	31 ft. 1 in.
	224					29 ft. 11 in.	31 ft. 4 in.	29 ft. 6 in.	30 ft. 11 in.
	230					30 ft. 8 in.	32 ft. 0 in.	30 ft. 3 in.	31 ft. 8 in.
	242			32 ft. 1 in.	33 ft. 5 in.	32 ft. 1 in.	33 ft. 5 in.	31 ft. 8 in.	33 ft. 1 in.
	260					34 ft. 3 in.	35 ft. 7 in.	33 ft. 10 in.	35 ft. 2 in.
281					36 ft. 3 in.	37 ft. 8 in.			
SuperCab	155			22 ft. 8 in.	24 ft. 1 in.				
	179	25 ft. 8 in.	27 ft. 0 in.	25 ft. 8 in.	27 ft. 0 in.	25 ft. 0 in.	26 ft. 4 in.		
	197					27 ft. 11 in.	29 ft. 3 in.	27 ft. 2 in.	28 ft. 7 in.
	203	28 ft. 8 in.	30 ft. 0 in.	28 ft. 8 in.	30 ft. 0 in.	27 ft. 11 in.	29 ft. 3 in.		
	215					28 ft. 10 in.	30 ft. 3 in.	29 ft. 4 in.	30 ft. 9 in.
	221					29 ft. 7 in.	30 ft. 11 in.	29 ft. 2 in.	30 ft. 7 in.
	233					31 ft. 0 in.	32 ft. 5 in.	30 ft. 7 in.	32 ft. 0 in.
	239	31 ft. 9 in.	33 ft. 1 in.	31 ft. 9 in.	33 ft. 1 in.	31 ft. 4 in.	32 ft. 8 in.		
	245					32 ft. 5 in.	33 ft. 10 in.	32 ft. 0 in.	33 ft. 5 in.
	251					33 ft. 2 in.	34 ft. 6 in.	32 ft. 9 in.	34 ft. 1 in.
	263					34 ft. 7 in.	36 ft. 0 in.	34 ft. 2 in.	35 ft. 7 in.
281					36 ft. 9 in.	38 ft. 2 in.	36 ft. 3 in.	37 ft. 8 in.	
Crew Cab	170			24 ft. 7 in.	26 ft. 0 in.				
	194	27 ft. 6 in.	28 ft. 11 in.	27 ft. 6 in.	28 ft. 11 in.	26 ft. 10 in.	28 ft. 2 in.		
	212					28 ft. 6 in.	29 ft. 10 in.	29 ft. 0 in.	30 ft. 5 in.
	218	29 ft. 2 in.	30 ft. 7 in.	29 ft. 2 in.	30 ft. 7 in.	29 ft. 9 in.	31 ft. 1 in.		
	230					30 ft. 8 in.	32 ft. 0 in.	30 ft. 3 in.	31 ft. 8 in.
	236					31 ft. 4 in.	32 ft. 9 in.	31 ft. 0 in.	32 ft. 4 in.
	248					32 ft. 9 in.	34 ft. 2 in.	32 ft. 5 in.	33 ft. 9 in.
	254	33 ft. 6 in.	34 ft. 11 in.	33 ft. 6 in.	34 ft. 11 in.	33 ft. 1 in.	34 ft. 6 in.		
	260					34 ft. 3 in.	35 ft. 7 in.	33 ft. 10 in.	35 ft. 2 in.
	266					34 ft. 11 in.	36 ft. 4 in.	34 ft. 6 in.	34 ft. 11 in.
278					36 ft. 5 in.	37 ft. 9 in.			

SD Chassis Cabs
F-650/F-750

NOTE: Please see the Major Product Summary pages and/or the Dealer Ordering Guide for availability.

2015

Super Duty Chassis Cabs F-650/F-750

Technical Specifications cont'd

Steering cont'd

POWER STEERING PUMP SPECIFICATIONS

Engine	Manufacturer/Model	Reservoir Capacity (max.)	Pump Drive
All	LUK VT-73	1 U.S. Quart	Gear, Direct

Suspensions

FRAME SPECIFICATIONS

Frame Order Code	Type	Dimensions D x W x Thickness (inches)	Yield Strength (psi)	Material (Notes)	Nominal Section Modulus (cu. in.)	Nominal Resisting Bending Moment (in.-lb.)
537	Straight Channel Side Rail with Kick-up at Rear Suspension Rearward ⁽¹⁾	9.125 x 3.062 x 0.312	80,000	A	10.75	860,000
533	Straight Channel Side Rail	9.125 x 3.062 x 0.312	80,000	A	10.75	860,000
534	Straight Channel Side Rail	10.125 x 3.062 x 0.312	50,000	A	12.64	632,000
535/53A	Straight Channel Side Rail	10.250 x 3.092 x 0.375	80,000	A	15.14	1,211,200
536/53F	Straight Channel Side Rail	10.125 x 3.580 x 0.312	120,000	B	14.18	1,701,600
538/53J	Straight Channel Side Rail	10.250 x 3.610 x 0.375	120,000	B	16.98	2,037,600
539/53L	Straight Channel Side Rail	10.375 x 3.705 x 0.438	120,000	B	20.11	2,413,200
410/412	Straight Channel Side Rail — Full Channel Outer "C" Channel Reinforcement	10.813 x 3.892 x 0.312	120,000	B	29.84 ⁽²⁾	3,580,800

(1) Kick-up rail section is 6.50" in depth.

(2) Section modulus value includes base frame rail, code 536.

NOTES:

A = High-strength, low-alloy steel

B = Heat-treated alloy steel

Super Duty Chassis Cabs F-650/F-750

Technical Specifications cont'd

2015

Suspensions cont'd

SHOCK ABSORBER SPECIFICATIONS — FRONT ONLY

Model	Wheelbase (in.)	Usage	No. Used	Piston Dia. (in.)	Type
All	All	Std.	2	1.375	Double-acting

SHOCK ABSORBER SPECIFICATIONS — REAR ONLY (with air suspension)

Model	Wheelbase (in.)	Usage	No. Used	Piston Dia. (in.)	Type
All	All	Std.	2	1.75	Double-acting

SPRING SPECIFICATIONS — FRONT LEAF

Series/Model	Combined Rating @ Ground (lbs.)	Number of Leaves	Total Thickness @ Pad (in.)	Active Length (in.) x Width (in.)	Deflection Rate, (Installed) (lb./in.)
All	8,500	2	2.44	54.0 x 3.0	1100
	10,000	2	2.65	54.0 x 4.0	1375
	12,000	2	2.65	54.0 x 4.0	1560
	13,200	2	2.70	54.0 x 4.0	2175
	14,000	2	3.20	54.0 x 4.0	2060

SPRING SPECIFICATIONS — REAR LEAF

Model	Combined Rating @ Ground (lbs.)	No. of Leaves	Total Pad Thickness (in.)	Deflection Rate, (Installed) (lb./in.)
All	15,500 (includes 4500-lb. Auxiliary Rubber Spring)	10	4.8	2900
	17,500 (includes 4500-lb. Auxiliary Rubber Spring)	10	6.3	3400
	18,500 (includes 4500-lb. Auxiliary Rubber Spring)	10	6.3	3600
	20,000 (includes 4500-lb. Auxiliary Rubber Spring)	11	6.3	3800
	23,500 (includes 4500-lb. Auxiliary Rubber Spring)	12	6.6	4400
	31,000 (includes 4500-lb. Auxiliary Rubber Spring)	13	6.9	5800

NOTE: Please see the Major Product Summary pages and/or the Dealer Ordering Guide for availability.

September 2013

resourcebook.dealerconnection.com

RE&T: 2015 Source Book

2015

Super Duty Chassis Cabs F-650/F-750

Technical Specifications cont'd

Tires and Wheels⁽¹⁾ TIRE SPECIFICATIONS

Size (Ply Rating)	Wheel Position	Brand/Model	Order Code	Rim Width (in.)	Maximum Inflation Pressure (psi) (front/rear)	Maximum Load Capacity by Axle (lbs.) (front/rear)	Revolutions Per Mile @ 45 mph
9R22.5F (12PR)	Frnt.	Michelin XZE	TBF	7.5	110/90	9000/15800	543
	Rr.	Michelin XZE	RBF				543
10R22.5F (12PR)	Frnt.	Michelin XZE	TBG	7.5	110/90	10300/18960	517
	Rr.	Michelin XZE	RBG				517
10R22.5G (14PR)	Frnt.	Michelin XDE M/S	RBH	7.5	110/90	11360/20320	515
	Frnt.	Michelin XZE	TBJ				517
	Rr.	Michelin XZE	RBJ				517
11R22.5G (14PR)	Frnt.	Continental HSR2	TDG	7.50/8.25	110/90	12350/23000	498
	Rr.	Continental HSR2	RDG				498
	Rr.	Continental HDR2	RDR				491
	Frnt.	Goodyear G661 HSA	TCT				497
	Frnt.	Goodyear G399 LHS	TCH				504
	Rr.	Goodyear G399 LHS	RCH				504
	Rr.	Goodyear G661 HSA	RCT				497
	Frnt.	Michelin XZE2	TC1				502
	Rr.	Michelin XZE2	RC1				502
	Rr.	Michelin XDA5	RN8				495
	Rr.	Michelin XDE M/S	RCS				497
	Rr.	Michelin XDN 2	RCD				496
11R22.5H (16PR)	Frnt.	Continental HSR2	TDH	7.50/8.25	110/90	12400/23200	498
	Rr.	Continental HSR2	RDH				498
	Rr.	Continental HDR2	RDS				491
	Rr.	Goodyear G182 RSD	RCX				496
	Rr.	Michelin XDE M/S	RCN				496
	Rr.	Michelin XDN 2	RCF				497
	Frnt.	Michelin XZE2	TC3				501
	Rr.	Michelin XZE2	RC3				501
225/70R19.5F (12PR)	Frnt.	Goodyear G647 RSS	TEF	6.75/7.50	95/95	7280/13660	640
	Rr.	Goodyear G647 RSS	REF				640
	Rr.	Goodyear G622 RSD	REG				641
235/80R22.5G (14PR)	Frnt.	Michelin XZE	TFA	7.5	90/90	9350/17640	555
	Rr.	Michelin XZE	RFA				555
245/70R19.5G (14PR)	Frnt.	Goodyear G647 RSS	TEM	6.75/7.50	110/90	9090/17500	626
	Rr.	Goodyear G647 RSS	REM				626
	Rr.	Goodyear G622 RSD	REP				620
245/70R19.5H (16PR)	Frnt.	Continental HSR1	TGL	6.75/7.50	110/90	9880/18760	630
	Rr.	Continental HSR1	RGL				630
	Rr.	Continental HDR	RGR				627
	Frnt.	Michelin XZE	TGK				619
	Rr.	Michelin XZE	RGK				619

(1) Some tires may be discontinued or require substitution. Refer to Commercial Truck Tools (CTT) for current availability.

SD Chassis Cabs
F-650/F-750

NOTE: Please see the Major Product Summary pages and/or the Dealer Ordering Guide for availability.

Super Duty Chassis Cabs F-650/F-750

Technical Specifications cont'd

2015

Tires and Wheels⁽¹⁾

TIRE SPECIFICATIONS cont'd

Size (Ply Rating)	Wheel Position	Brand/Model	Order Code	Rim Width (in.)	Maximum Inflation Pressure (psi) (front/rear)	Maximum Load Capacity by Axle (lbs.) (front/rear)	Revolutions Per Mile @ 45 mph
255/70R22.5H (16PR)	Fr.	Goodyear G661 HSA	THS	7.5/8.25	110/90	11020/20280	566
	Rr.	Goodyear G661 HSA	RHS				566
	Rr.	Goodyear G622 RSD	RHH				561
	Fr.	Michelin XZE	TJC				563
	Rr.	Michelin XZE	RJC				563
255/80R22.5G (14PR)	Fr.	Michelin XZE M/S	TJD	7.5/8.25	90/90	10410/19240	538
	Rr.	Michelin XZE M/S	RJD				538
275/70R22.5J (18PR)	Fr.	Goodyear G661 HSA	THT	7.5/8.25	90/90	10410/19240	547
	Rr.	Goodyear G661 HSA	RHT				547
	Fr.	Michelin XZE2+	THP				545
	Rr.	Michelin XZE2+	RHP				545
275/80R22.5G (14PR)	Rr.	Michelin XDA5+	RN5	7.5/8.25	110/90	12350/22700	509
	Fr.	Michelin XZE2	TJF				517
	Rr.	Michelin XZE2	RJF				517
295/75R22.5G (14PR)	Rr.	Goodyear G182 RSD	RMM	8.25	110/90	12350/22700	512
	Rr.	Goodyear G338 1AD	RMF				509
	Fr.	Goodyear G182 RSD	TMM				512
	Rr.	Goodyear G661 HSA	RMP				512
295/80R22.5H (16PR)	Fr.	Michelin XZE2+	TKJ	8.25	110/90	14600/19920	503
	Rr.	Michelin XZE2+	RKJ				503

(1) Some tires may be discontinued or require substitution. Refer to Commercial Truck Tools (CTT) for current availability.

WHEEL SPECIFICATIONS

Wheel Type	Position	Wheel Size	No. of Studs	Bolt Circle mm (in.)
Steel, Powder-coated White	Front	19.5" x 6.75"	8	275 (10.83)
Steel, Powder-coated White	Rear	19.5" x 6.75"	8	275 (10.83)
Aluminum, Polished	Front	19.5" x 7.50"	8	275 (10.83)
Aluminum, Polished	Rear	19.5" x 7.50"	8	275 (10.83)
Steel, Powder-coated White	Front	19.5" x 7.50"	10	285.5 (11.25)
Steel, Powder-coated White	Rear	19.5" x 7.50"	10	285.5 (11.25)
Aluminum, Polished	Front	19.5" x 7.50"	10	285.5 (11.25)
Aluminum, Polished	Rear	19.5" x 7.50"	10	285.5 (11.25)
Steel, Powder-coated White	Front	22.5" x 7.50"	10	285.5 (11.25)
Steel, Powder-coated White	Rear	22.5" x 7.50"	10	285.5 (11.25)
Steel, Powder-coated White	Front	22.5" x 8.25"	10	285.5 (11.25)
Steel, Powder-coated White	Rear	22.5" x 8.25"	10	285.5 (11.25)
Aluminum, Polished	Front	22.5" x 8.25"	10	285.5 (11.25)
Aluminum, Polished	Rear	22.5" x 8.25"	10	285.5 (11.25)

NOTE: Please see the Major Product Summary pages and/or the Dealer Ordering Guide for availability.

September 2013

esourcebook.dealerconnection.com

RE&T: 2015 Source Book

SD Chassis Cabs
F-650/F-750

2015

Super Duty Chassis Cabs F-650/F-750

Technical Specifications cont'd

Transmission

MANUAL TRANSMISSION SPECIFICATIONS

Make/Type	Eaton FS-5406A 6-speed Direct	
Torque Capacity (lb.-ft.)	560	
Ratios (to 1):		
1st	9.01	
2nd	5.27	
3rd	3.22	
4th	2.04	
5th	1.36	
6th	1.00	
Reverse	8.63	
Lubricant Capacity (pt.)	19.5	
Synchronizers	All Forward Gears	
Gears: Material	Carburized Steel	
Type	— Helical	Low, 1st, 2nd, 3rd, 4th, 5th, 6th & Reverse
Bearings:		
Mainshaft	— Front	Tapered Roller
	— Rear	Ball Bearing
Countershaft	— Front	Tapered Roller
	— Rear	Tapered Roller
Mainshaft Gear	Needle Roller	
Reverse Idler Gear	Needle Roller	
Power Takeoff Data:		
Opening	SAE 6-bolt, LH/RH Sides ⁽¹⁾	
PTO Speed % of Engine	52	
Pitch Line Velocity @ 1000 Engine rpm (ft./min.)	882	
rpm @ 1000 Engine rpm	520	
Diametral pitch	6.35	

(1) RH side may be blocked by exhaust.

Super Duty Chassis Cabs F-650/F-750

Technical Specifications cont'd

2015

Transmission cont'd

MANUAL TRANSMISSION SPECIFICATIONS cont'd

Make/Type	Eaton FSO-8406A 6-speed Direct	TTC Spicer® ES56-7B 7-speed Direct	TTC Spicer ES066- 7B 7-speed Overdrive
Torque Capacity (lb.-ft.)	860	560	660
Ratios (to 1):			
Low	—	10.09	7.48
1st	7.05	7.52	4.43
2nd	4.13	3.72	2.76
3rd	2.52	2.56	1.90
4th	1.59	1.81	1.34
5th	1.00	1.35	1.00
6th	.78	1.00	.74
Reverse	6.75	8.99	6.67
Lubricant Capacity (pt.)	19.5	22.0	22.0
Synchronizers	All Forward Gears		
Gears: Material	Carburized Steel		
Type	Helical – all gears		
Bearings:			
Mainshaft	— Front	Tapered Roller	
	— Rear	Tapered Roller	
Countershaft	— Front	Tapered Roller	
	— Rear	Tapered Roller	
Mainshaft Gear	Tapered Roller		
Reverse Idler Gear	Tapered Roller		
Power Takeoff Data:			
Opening	RH/LH 6-bolt ⁽¹⁾		
PTO Speed % of Engine		49	67
Pitch Line Velocity @ 1000 Engine rpm (ft./min.)	LH-661/RH-374	882	
rpm @ 1000 Engine rpm		490	670
Diametral Pitch	7.0		

(1) RH side may be blocked by exhaust.

CLUTCH SPECIFICATIONS

Type	Eaton Fuller® 1401 1-plate	Eaton Fuller 1402 2-plate
Linkage Adj. Type	"Solo" Hydraulic Pull-type, Self-adj.	
Disc – Type	Segmented With Coaxial Spring Damper	
Facing Material	Ceramic	
Lining Material	N/A	
Outside Diameter (approx. in.)	13.75	
Lining Thickness	0.181	
Facing Area	24.0 sq. in.	66 sq. in.
Flywheel type	Flat	
Release Bearing – Race	Lube Fitting Provided	
Release Bearing – Sleeve	Lube for Life	
Total Pressure Plate Load (lb.) – Make	3000	2000
Max. Clutch Torque (lb.-ft.)	620	860

NOTE: Please see the Major Product Summary pages and/or the Dealer Ordering Guide for availability.

September 2013

esourcebook.dealerconnection.com

RE&T: 2015 Source Book

Transmission cont'd

AUTOMATIC TRANSMISSION SPECIFICATIONS

Make/Type	Allison™ 2200 6-speed (w/park pawl)	Allison 2500 6-speed	Ford 6-speed
Torque Capacity (lb.-ft.) Net	550		
Ratios (to 1):			
1st	3.10	3.51	3.97
2nd	1.81	1.90	2.32
3rd	1.41	1.44	1.52
4th	1.00	1.00	1.15
5th	0.71	0.74	0.86
6th	0.61	0.64	0.67
Reverse	4.49	5.09	3.13
Gears — Type	Helical		
Fluid Capacity (pts.)	38		38
Oil System	Sump		Sump
Filter	Spin-on		
Power Takeoff Data:	Converter-driven		
Opening	SAE 6-bolt RH ⁽¹⁾		SAE 6-bolt LH
Gear Ratio	N/A		1.00:1
Rating	250 lb.-ft.		
Make/Type	Allison 3000 5-speed	Allison 3000 6-speed	
Torque Capacity (lb.-ft.) Net	1100		
Ratios (to 1):			
1st	3.49		
2nd	1.86		
3rd	1.41		
4th	1.00		
5th	0.75		
6th	—	0.65	
Reverse	5.03		
Gears — Type	Helical		
Fluid Capacity (pts.)	58		
Oil System	Sump		
Filter	Integral		
Power Takeoff Data:	Engine-driven		
Opening	RH/LH 10-bolt ⁽¹⁾		
Gear Ratio	2.71		
Rating	485 lb.-ft.		

(1) RH side may be blocked by exhaust.

Super Duty Chassis Cabs F-650/F-750

Technical Specifications cont'd

2015

Transmission cont'd

AUTOMATIC TRANSMISSION SPECIFICATIONS cont'd

Make/Type	Allison™ 3200 6-speed	Allison 3500 5-speed	Allison 3500 6-speed
Torque Capacity (lb.-ft.) Net	1200	800	
Ratios (to 1):			
1st	3.49	4.59	
2nd	1.86	2.25	
3rd	1.41	1.54	
4th	1.00		
5th	0.75		
6th	0.65	—	0.65
Reverse	5.03	5.00	
Gears — Type	Helical		
Fluid Capacity (pts.)	58		
Oil System	Sump		
Filter	Integral		
Power Takeoff Data:	Engine-driven		
Opening	RH/LH 10-bolt ⁽¹⁾		
Gear Ratio	2.71		
Rating	485 lb.-ft.		

(1) RH side may be blocked by exhaust.

UNIVERSAL JOINT DRIVESHAFT SPECIFICATIONS

Transmission	U-joint/Driveshaft
Allison 2200	SPL-100
Allison 2500	SPL-100
Allison 3000	1710
Allison 3200	1710
Allison 3500	1710 ⁽¹⁾
Fuller® FS-5406A	SPL-100
Fuller FSO-8406A	SPL-100
Spicer® ES56-7B	1710 ⁽¹⁾
Spicer ES066-7B	SPL-100 ⁽¹⁾

(1) SPL-140 available option, required with option code 183 or with hydraulic brakes without air supply. See Commercial Truck Tools (CTT) for application specifics.

Windshield Wipers

ARM AND BLADE SPECIFICATIONS

Make	Arm Length	Blade Length
Trico	21.5" LH	19.68"

NOTE: Please see the Major Product Summary pages and/or the Dealer Ordering Guide for availability.

September 2013

esourcebook.dealerconnection.com

RE&T: 2015 Source Book